



GRANITE BASIN RANCH

15811 W SH 29 Llano, TX

34 Acres | \$549,000



Copyright 2023 Grand Land Realty, LLC
The material contained in this document is based in part upon information furnished to Grand Land Realty, LLC. by sources deemed to be reliable. The information is believed to be accurate in all material respects, but no representation or warranty, expressed, or implied, as to list accuracy or completeness is made by any party. Recipients should conduct their own investigation and analysis of the information described herein.



Dustin Preston

Realtor®- Land Specialist

dpreston@grandland.com

(281) 787-5401

PROPERTY DESCRIPTION

The Granite Basin Ranch is an attractive 34-acre property located just outside Llano, TX. You'll find numerous wildlife species on the ranch, including whitetail deer, wild hogs, migratory waterfowl, and multiple varmint species. There is an excellent mixture of pastureland and brush to provide the perfect habitat for your wildlife and cattle needs. You'll also find a medium-sized tank that has been more than sufficient in holding/supplying water. This tract is close to several Metropolitan cities, making it a great recreational weekend getaway. It would also serve as a fantastic investment as it has over 1400' of HWY 29 frontage and remains on a path of growth.

The Granite Basin Ranch offers 34 acres of wildlife-exempt land with over 1400' of HWY 29 frontage. A wet weather creek feeds the medium-sized tank on the property. The tank holds water and has been the primary water source for wildlife and livestock. Throughout the property, you'll find numerous Live Oaks, Mesquite, KR Bluestem, and other native trees and grasses in this area. With more than 30' of elevation change, you have views for miles.

The Granite Basin Ranch has three sides fenced with barbed wire. Electric pole on the property.

Copyright 2023 Grand Land Realty, LLC
The material contained in this document is based in part upon information furnished to Grand Land Realty, LLC, by sources deemed to be reliable. The information is believed to be accurate in all material respects, but no representation or warranty, expressed, or implied, as to list accuracy or completeness is made by any party. Recipients should conduct their own investigation and analysis of the information described herein.



Dustin Preston
Realtor®- Land Specialist
dpreston@grandland.com
(281) 787-5401



SCAN HERE TO SEE MORE OF
GRANITE BASIN RANCH

LOCATION

Llano County

18 miles to Llano Municipal Airport, 38 miles to Fredericksburg, 64 miles to Georgetown, 95 miles to Austin-Bergstrom International Airport.

DIRECTIONS

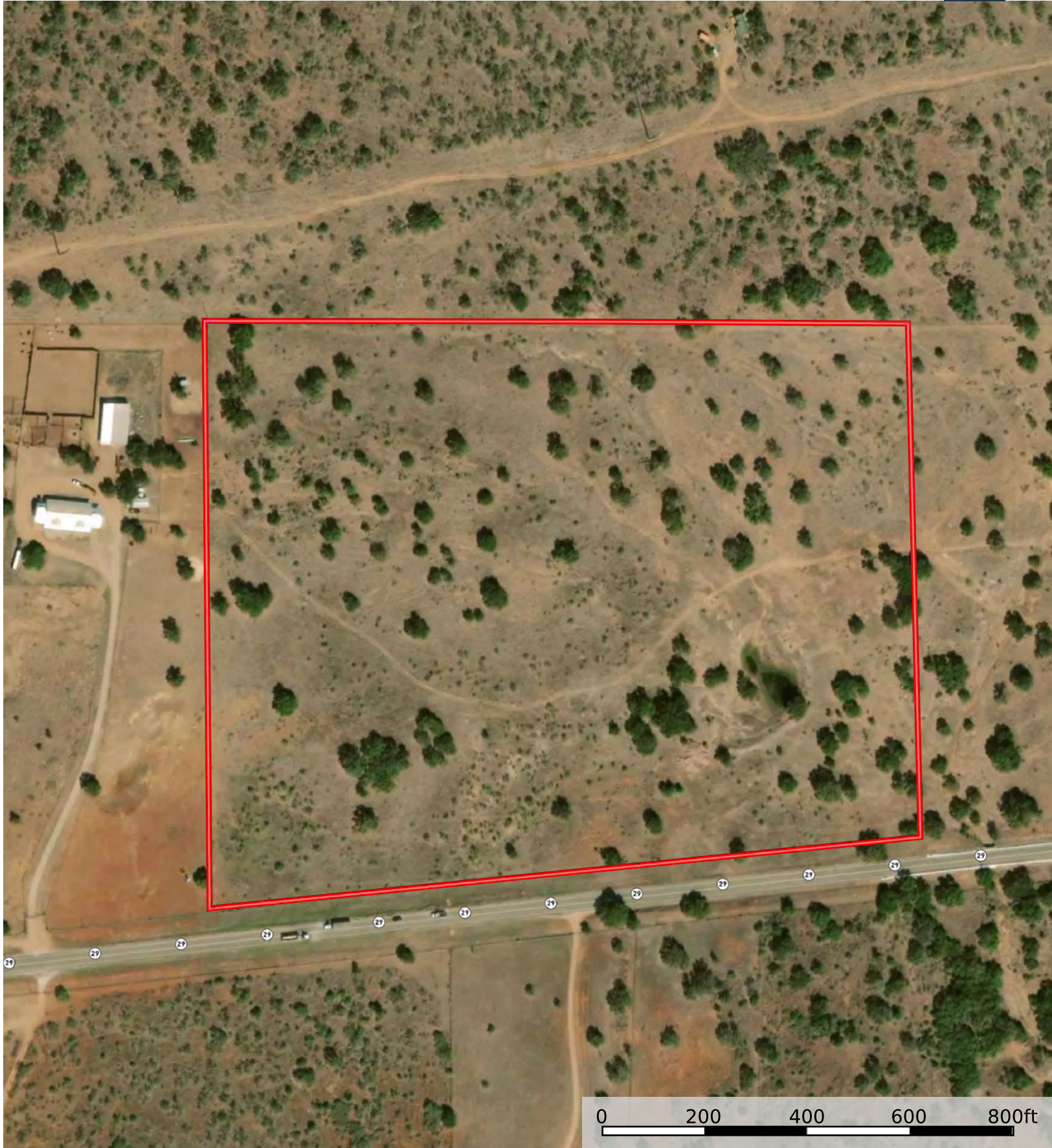
From Llano take HWY 29 west for 15.4 miles. Property will be on your right.


Copyright 2023 Grand Land Realty, LLC
The material contained in this document is based in part upon information furnished to Grand Land Realty, LLC. by sources deemed to be reliable. The information is believed to be accurate in all material respects, but no representation or warranty, expressed, or implied, as to list accuracy or completeness is made by any party. Recipients should conduct their own investigation and analysis of the information described herein.



Dustin Preston
Realtor®- Land Specialist
dpreston@grandland.com
(281) 787-5401

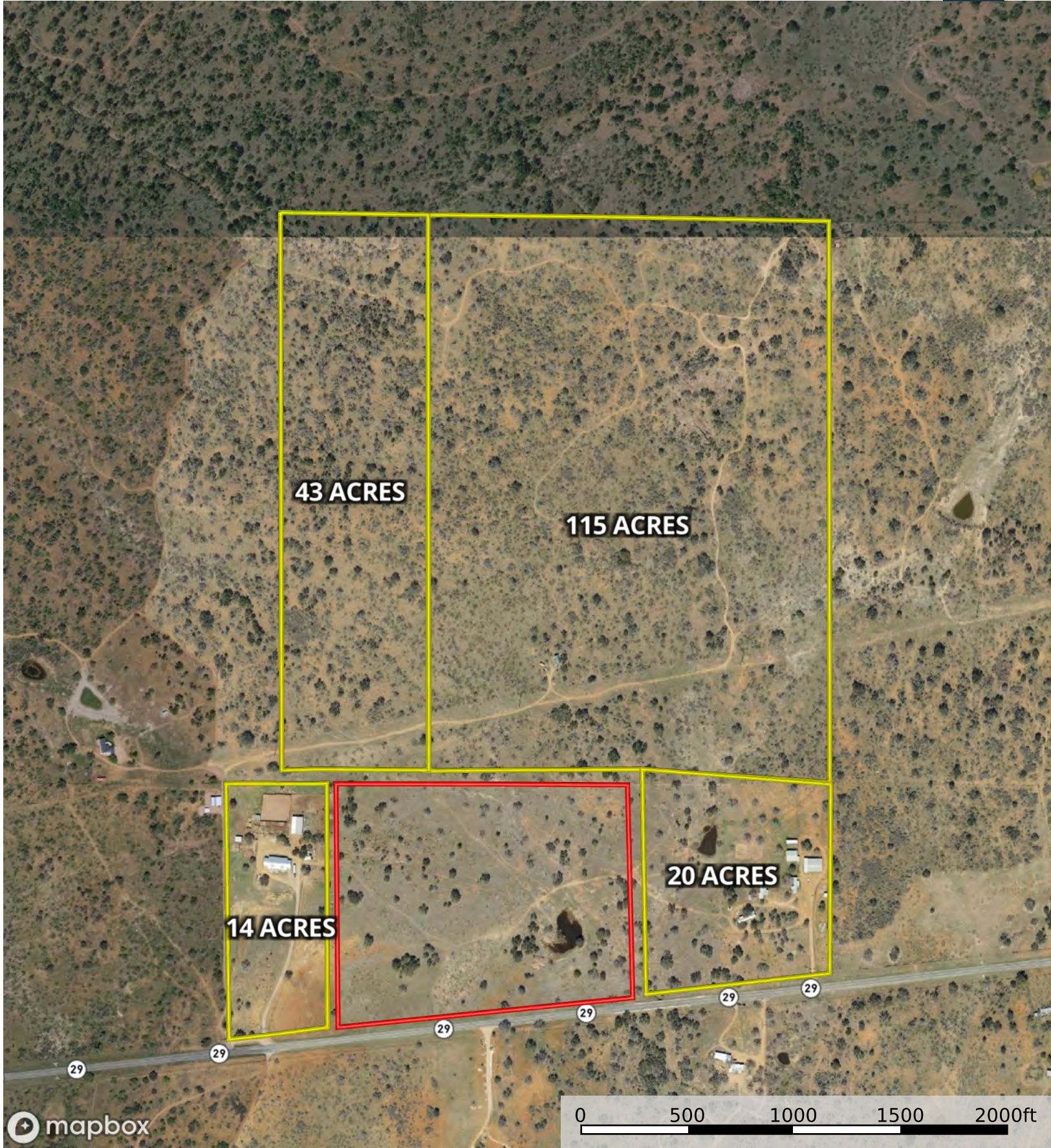




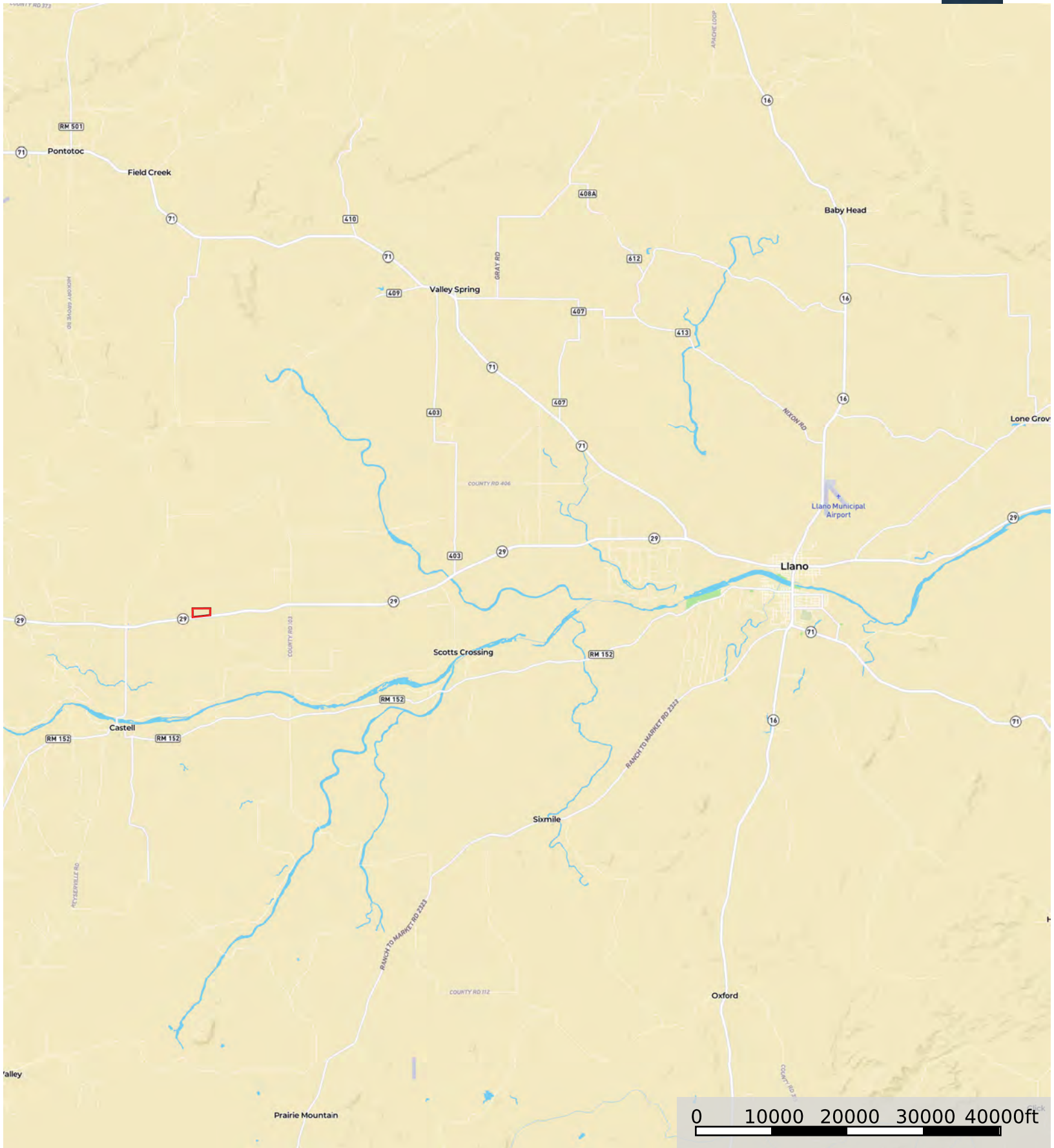
 Boundary



Boundary



Boundary 1 Boundary



Boundary