



GRANITE BASIN RANCH

15811 W SH 29 Llano, TX

20 Acres | \$439,000



Copyright 2023 Grand Land Realty, LLC
The material contained in this document is based in part upon information furnished to Grand Land Realty, LLC. by sources deemed to be reliable. The information is believed to be accurate in all material respects, but no representation or warranty, expressed, or implied, as to list accuracy or completeness is made by any party. Recipients should conduct their own investigation and analysis of the information described herein.



Dustin Preston

Realtor®- Land Specialist

dpreston@grandland.com

(281) 787-5401

PROPERTY DESCRIPTION

The Granite Basin Ranch is an attractive 20-acre property located just outside Llano, TX. You'll find numerous wildlife species on the ranch, including whitetail deer, wild hogs, migratory waterfowl, and multiple varmint species. There is an excellent mixture of pastureland and brush to provide the perfect habitat for your wildlife and cattle needs. You'll also find one medium-sized tank that has been more than sufficient in holding/supplying water. The Granite Basin Ranch has one manufactured home on-site and a large shop with living quarters and multiple storage rooms. This tract is close to several Metropolitan cities, making it a great recreational weekend getaway. It would also serve as a fantastic investment as it has over 900' of HWY 29 frontage and remains in a path of growth.

The Granite Basin Ranch offers 20 acres of wildlife-exempt land with over 900' of HWY 29 frontage. A wet weather creek feeds the medium-sized tank on the property. The tank holds water and has been the primary water source for wildlife and livestock. Throughout the property, you'll find numerous Live Oaks, Mesquite, KR Bluestem, and other native trees and grasses in this area. With more than 30' of elevation change, you have views for miles.

One- 3-bedroom 2 bath manufactured home is on-site and is in excellent condition. Behind the home, you'll find a nice set of working pens, a large shop with additional remodeled living quarters, and multiple storage rooms. There are multiple septic systems and one water well approximately 340' deep.

Copyright 2023 Grand Land Realty, LLC
The material contained in this document is based in part upon information furnished to Grand Land Realty, LLC. by sources deemed to be reliable. The information is believed to be accurate in all material respects, but no representation or warranty, expressed, or implied, as to list accuracy or completeness is made by any party. Recipients should conduct their own investigation and analysis of the information described herein.



Dustin Preston
Realtor®- Land Specialist
dpreston@grandland.com
(281) 787-5401



SCAN HERE TO SEE MORE OF
GRANITE BASIN RANCH



LOCATION

Llano County

18 miles to Llano Municipal Airport, 38 miles to Fredericksburg, 64 miles to Georgetown, 95 miles to Austin-Bergstrom International Airport.

DIRECTIONS

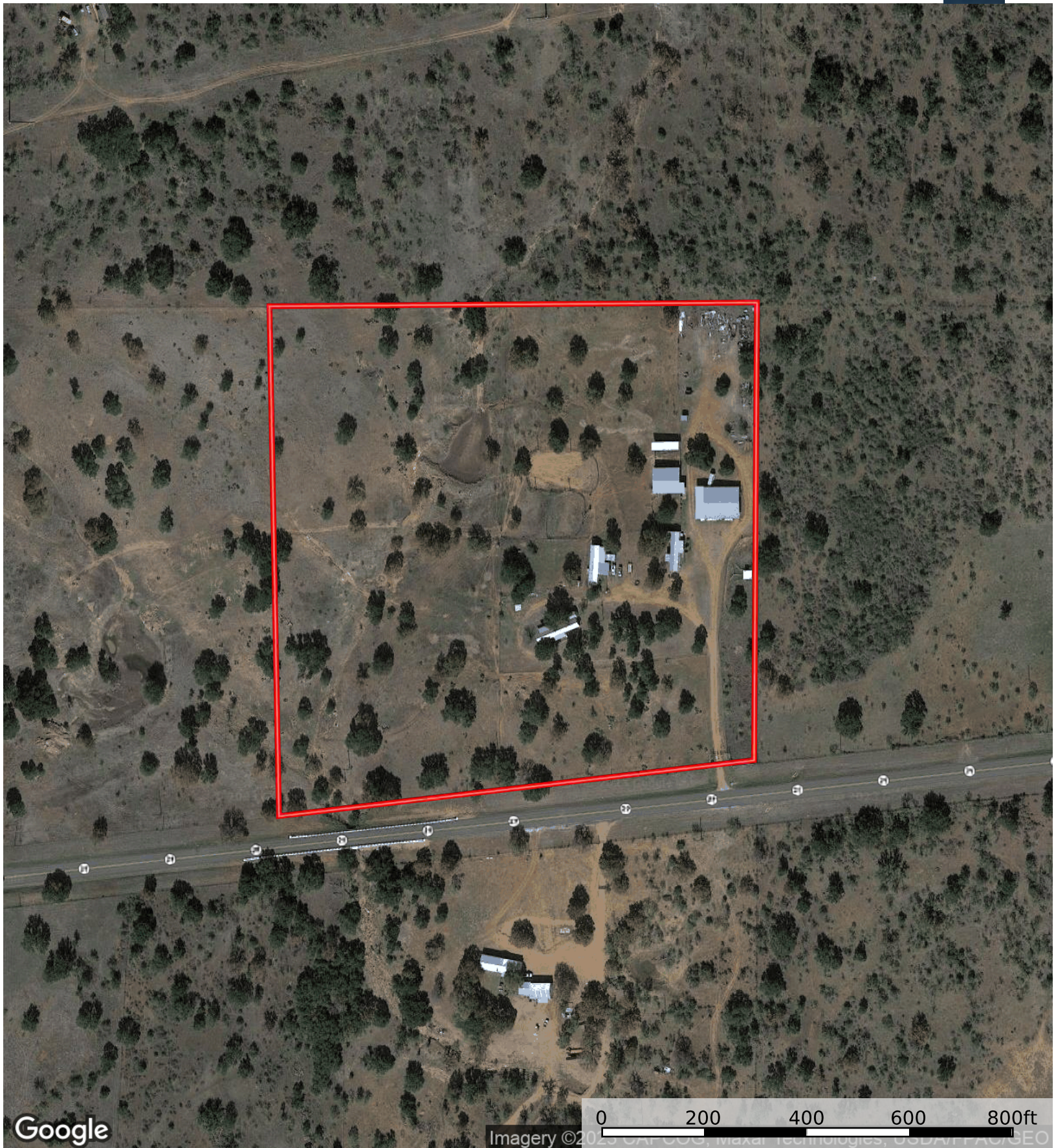
From Llano take HWY 29 west for 15.4 miles. Property will be on your right.

Copyright 2023 Grand Land Realty, LLC
The material contained in this document is based in part upon information furnished to Grand Land Realty, LLC. by sources deemed to be reliable. The information is believed to be accurate in all material respects, but no representation or warranty, expressed, or implied, as to list accuracy or completeness is made by any party. Recipients should conduct their own investigation and analysis of the information described herein.



Dustin Preston
Realtor®- Land Specialist
dpreston@grandland.com
(281) 787-5401



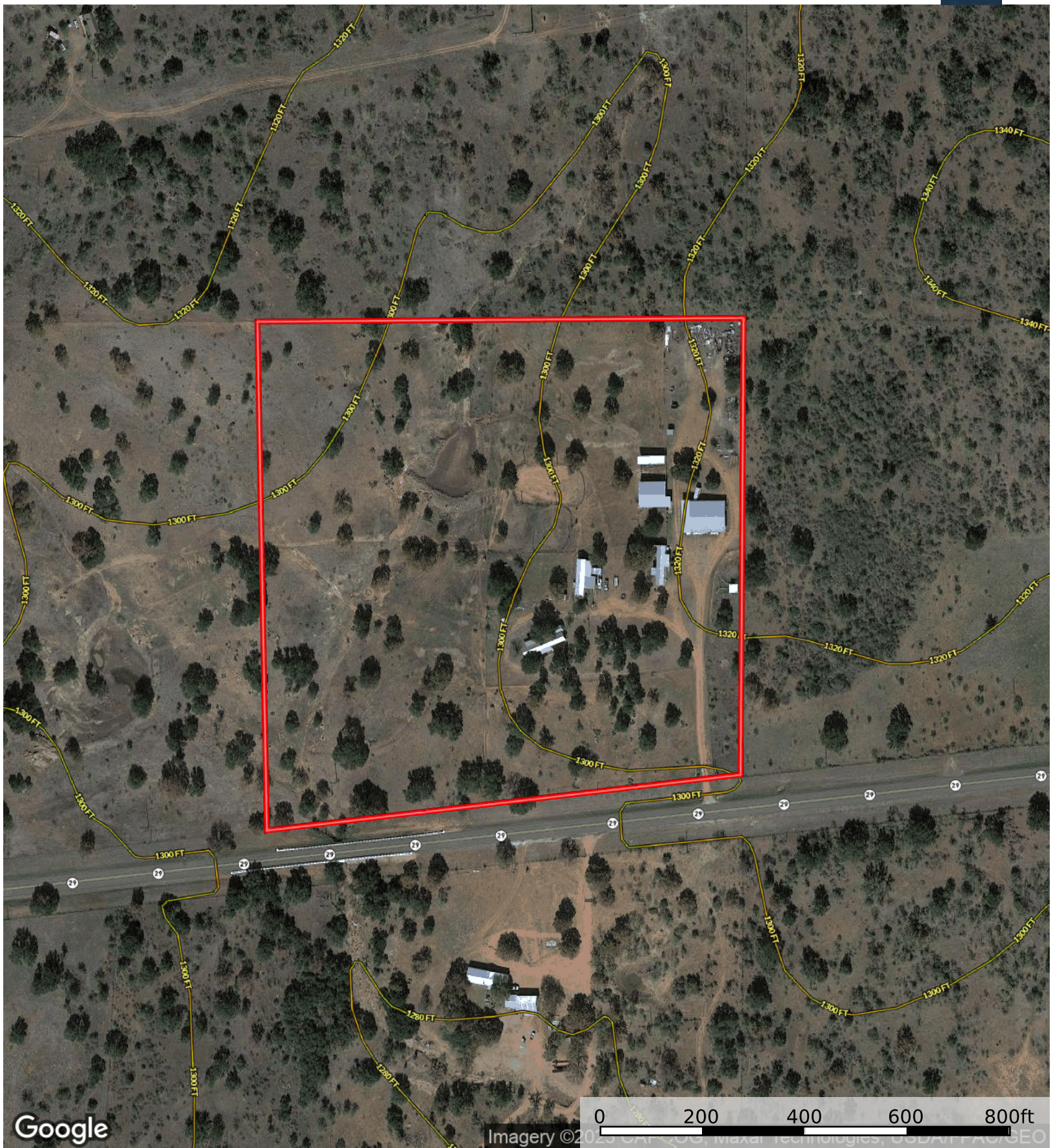


Google

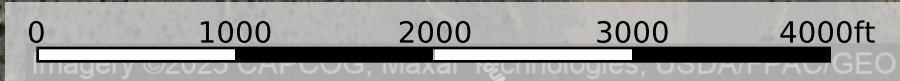
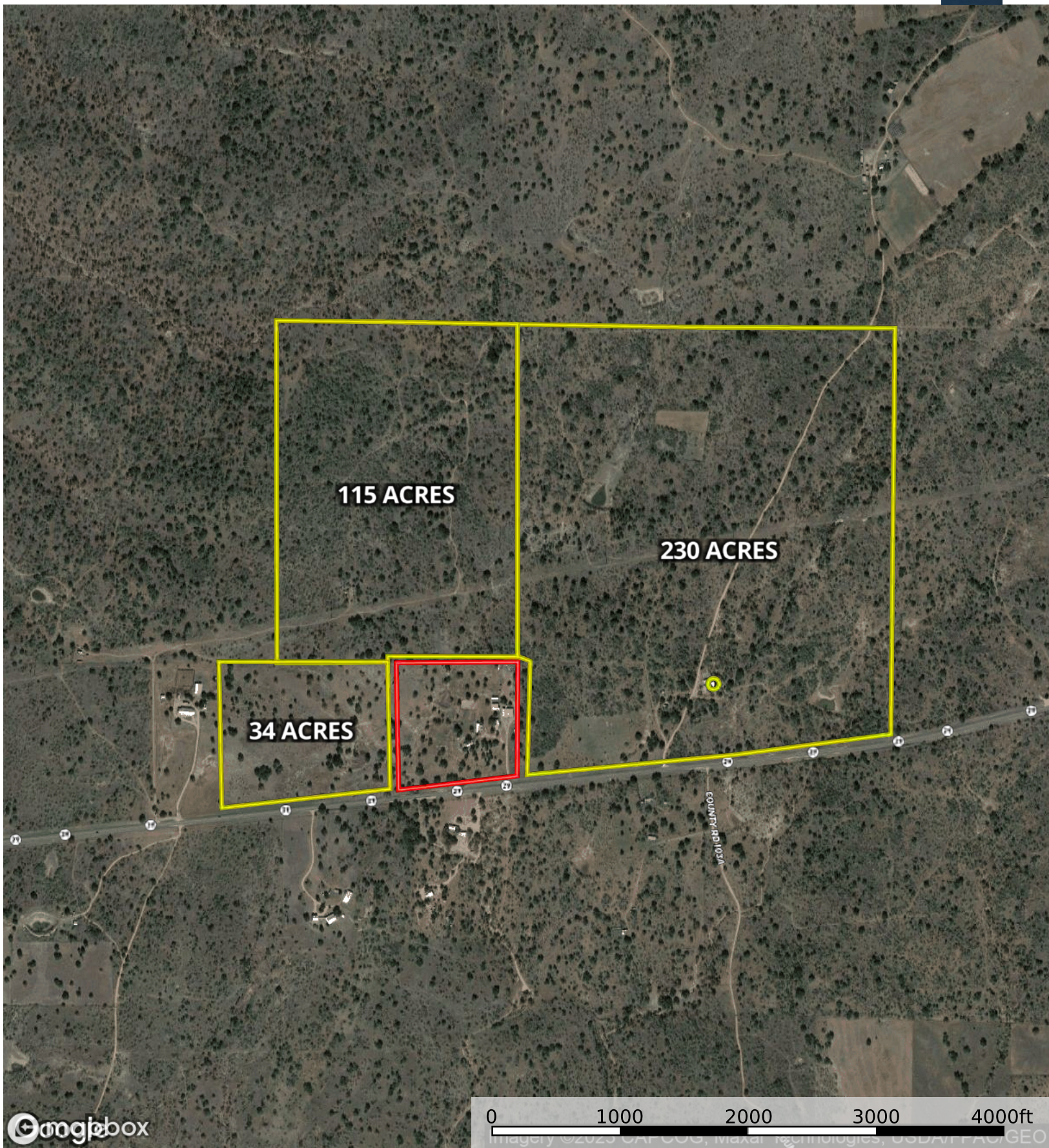
Imagery ©2025 CAFCOS, Maxar Technologies, USDA/FAC/BEO

0 200 400 600 800ft

Boundary



Boundary



Boundary 1 Boundary