



# Sandy Oak Retreat

12943 Bartkowiak Rd, Bremond, TX

44 Acres

\$635,000



## SECLUDED

## CABIN & BARN

## MATURE OAKS

**Sandy Oak Retreat is an attractive 44-acre property located between College Station and Waco. This property has a roughly 1,300 sq. ft. well-cared-for cabin nestled in the middle of the property, entirely surrounded by large, mature oaks. You'll also find a large shop offset from the cabin with a gun range to its side. The land is 80% wooded, with the majority being Post and Live Oak. There is also a wide variety of wildlife on this property.**

**These 44 acres of wildlife-exempt land have 30 feet of elevation change from east to west. There is a small tank on the east side of the property. This property has great perimeter fencing. There is also electricity and a water well that supplies water for the whole property. You'll also find a shop with a large roll-up door and small living quarters inside the shop.**

Copyright 2022 Grand Land Realty, LLC  
The material contained in this document is based in part upon information furnished to Grand Land Realty, LLC, by sources deemed to be reliable. The information is believed to be accurate in all material respects, but no representation or warranty, expressed, or implied, as to list accuracy or completeness is made by any party. Recipients should conduct their own investigation and analysis of the information described herein.



**Dustin Preston**

**Realtor®- Land Specialist**

**[dpreston@grandlandco.com](mailto:dpreston@grandlandco.com)**

**(281) 787-5401**





## LOCATION

**Robertson County, Bremond ISD**

**Approximately 4 miles to downtown Bremond. 39 miles to Bryan-College Station and Waco, and 80 miles to Austin-Bergstrom International Airport.**

## DIRECTIONS

**From Bremond, take HWY 14 South for 3 miles, turn left onto Bartkowiak Dr, follow the road for 2 miles, property entrance will be on your right.**

Copyright 2022 Grand Land Realty, LLC  
The material contained in this document is based in part upon information furnished to Grand Land Realty, LLC, by sources deemed to be reliable. The information is believed to be accurate in all material respects, but no representation or warranty, expressed, or implied, as to list accuracy or completeness is made by any party. Recipients should conduct their own investigation and analysis of the information described herein.



**Dustin Preston**


**Realtor®- Land Specialist**

**[dpreston@grandlandco.com](mailto:dpreston@grandlandco.com)**

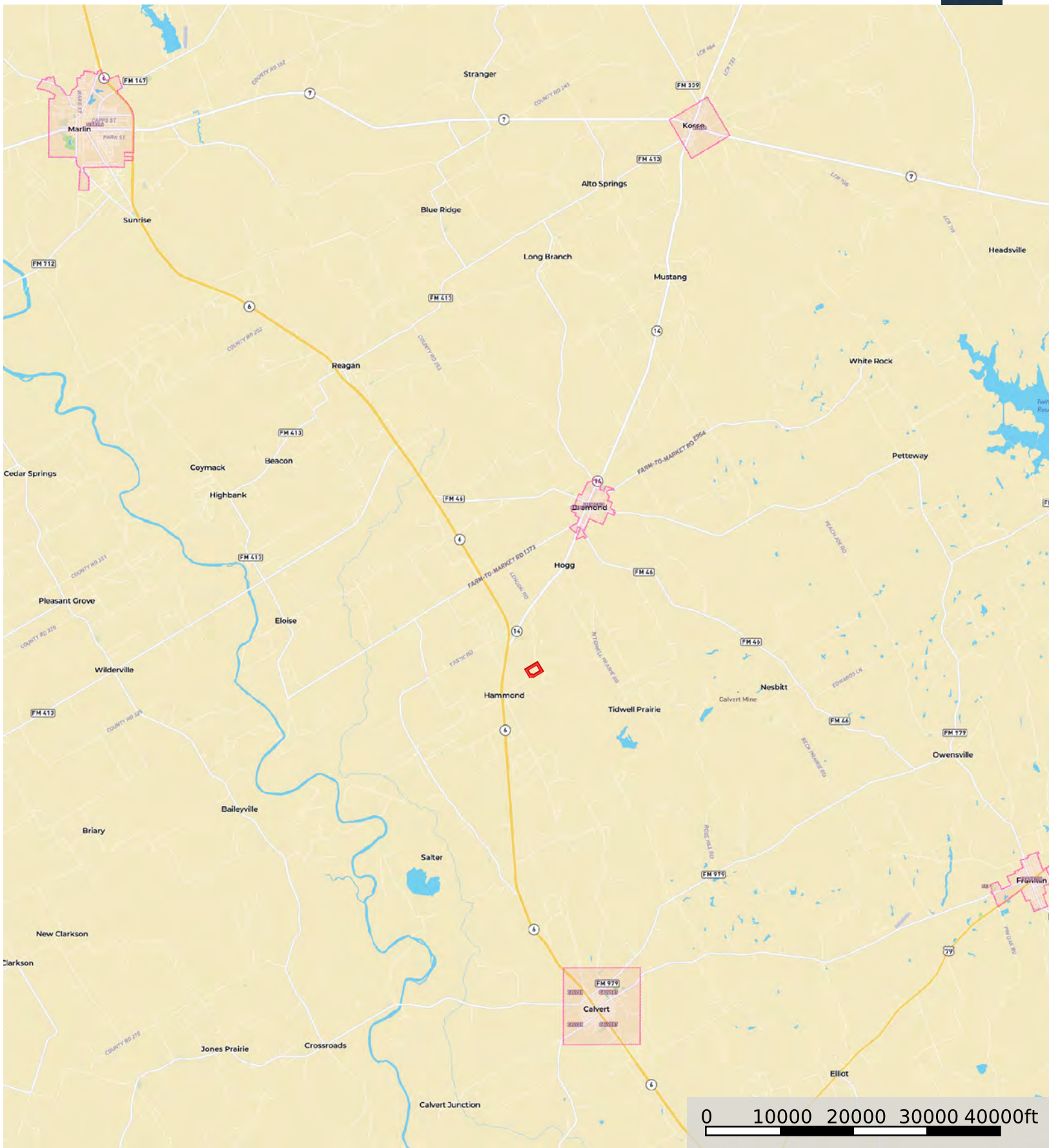
**(281) 787-5401**





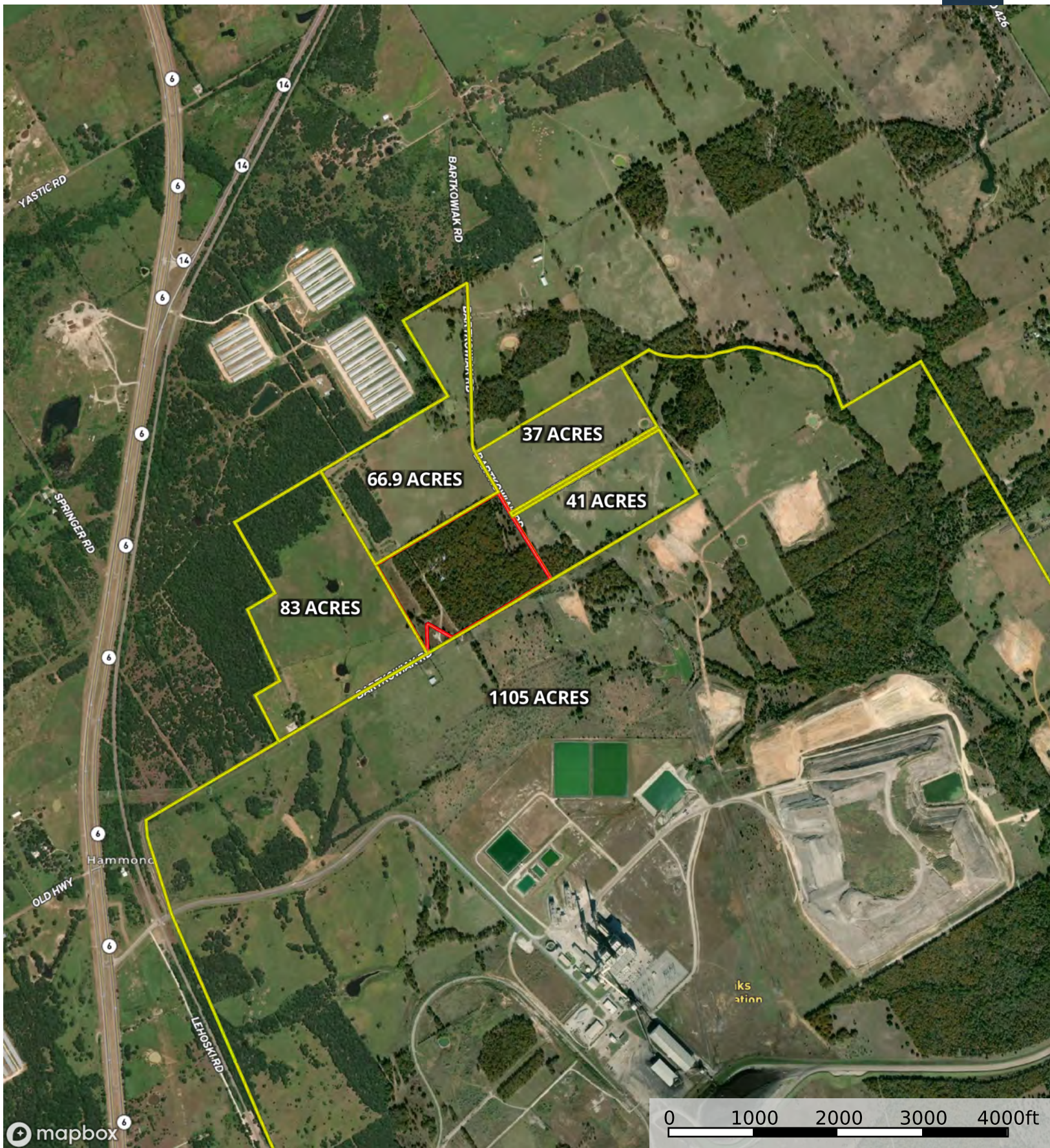
 Boundary





Boundary





mapbox

0 1000 2000 3000 4000ft

Boundary 1 Boundary





Boundary