



# Seadrift Bayfront Home

1406 W. Bay Ave., Seadrift, TX 77983

0.163 Acres

\$749,950



**4 BED / 4 BATH**

**3,376 SQ. FT.**

**BUILT 2005**

This quintessential 2-story bayfront home has 4 bedrooms, 4 baths, a flex room, 2 complete kitchens, an elevator, large garage, solid wood floors, spacious front deck, and a great view overlooking San Antonio Bay. Located on the west end of Bay Avenue, this property has a waterfront view with the benefit of lower traffic and is less than 1 mile to a boat ramp. This home has plenty of room for family and friends. The multi-level layout with private access to each allows the potential for separate rental properties if desired. Most of the home is designed to ADA compliance.

The upper level has 3 bedrooms, 2 bathrooms, great room, kitchen, a combination island and breakfast bar, multiple built-ins, and large picture windows. This level also has solid wood flooring and ceiling. The master bath has a large soaking tub and full shower.

The ground level has 1 bedroom, 2 full bathrooms, a flex room large enough for several sets of bunk beds, a dine-in kitchen with floating island, entertainment area, and expansive garage with rich wood paneling, and washer/dryer connections. At the rear of the garage is an elevator that connects the upper level. A person can enter through the garage and utilize the elevator to access the upper level without having to navigate the stairs.

The home has 2x6 studs, plank siding, composite decking on the upper-level porch, storm covers for all the windows accessible from the bottom level, impact resistant windows elsewhere, and a large driveway with ample parking for multiple vehicles.

This impeccably built custom home is ready for the next family to enjoy and make decades of memories with family and friends.

Copyright 2022 Grand Land Realty, LLC  
The material contained in this document is based in part upon information furnished to Grand Land Realty, LLC. by sources deemed to be reliable. The information is believed to be accurate in all material respects, but no representation or warranty, expressed, or implied, as to list accuracy or completeness is made by any party. Recipients should conduct their own investigation and analysis of the information described herein.



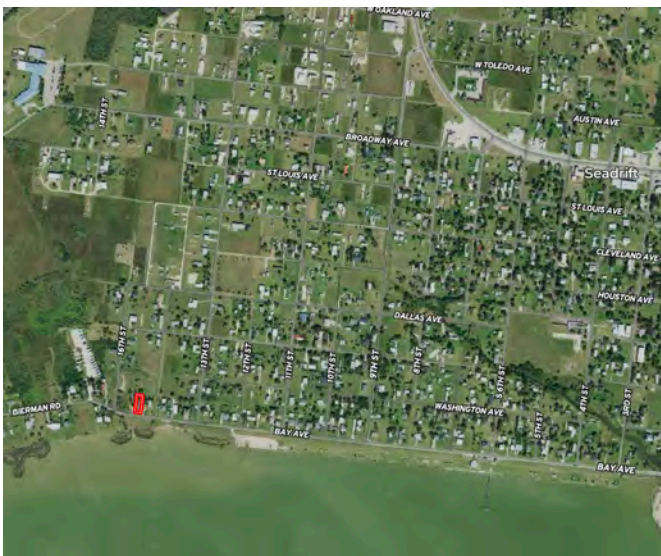
**John Melnar**

**Broker & Partner**

[john@grandlandco.com](mailto:john@grandlandco.com)

**(512) 497-8284**





## LOCATION

Calhoun County ISD

33 miles to Victoria, 150-160 miles to Houston, San Antonio, and Austin.

## DIRECTIONS

In Seadrift, head south to Bay Ave. The property is near the corner of 15th St.

Copyright 2022 Grand Land Realty, LLC  
The material contained in this document is based in part upon information furnished to Grand Land Realty, LLC. by sources deemed to be reliable. The information is believed to be accurate in all material respects, but no representation or warranty, expressed, or implied, as to list accuracy or completeness is made by any party. Recipients should conduct their own investigation and analysis of the information described herein.



**John Melnar**

**Broker & Partner**

[john@grandlandco.com](mailto:john@grandlandco.com)

**(512) 497-8284**