



Slopes of Nutty Brown Lots 13 & 14

181 Nueces Ln, Austin, TX 78737

1.003 Acres

\$319,800

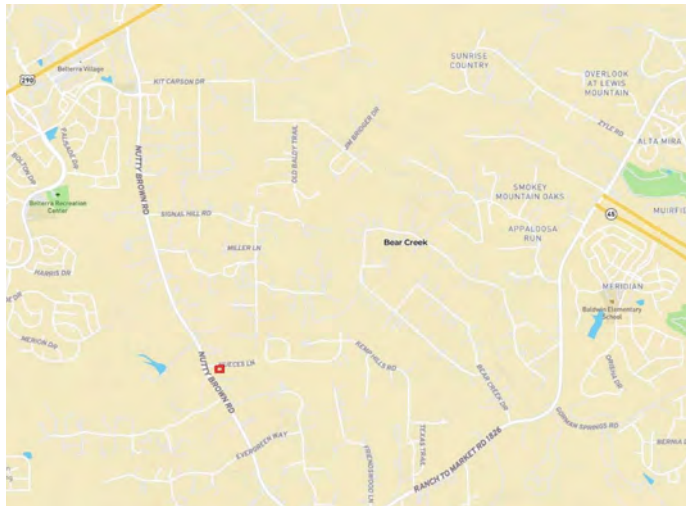


UNRESTRICTED

NO HOA

CONVENIENT LOCATION

A rare 1.003 unrestricted acres in Hays County consisting of two 0.5 acre lots platted in 1985, preceding current subdivision regulations making it eligible for a septic system. A shared water well provides water to the property. The property is flat and cleared, with large Live Oak and Pecan trees along the back fence. It is conveniently located just 3 miles from Hwy 290 and a new HEB planned for 2022, 5 minutes to Belterra Village with restaurants, retail shopping, gym, and movie theatre, and 30 minutes to downtown Austin. No HOA. Dripping Springs ISD. Property corners and waterline valve are marked.



LOCATION

Hays County

3 miles to Hwy 290

19 miles to downtown Austin

DIRECTIONS

From Austin, head west on Hwy 290, left on Nutty Brown Rd., in 3 miles turn left on Nueces Ln, property on right with a sign.

Copyright 2020 Grand Land Realty, LLC

The material contained in this document is based in part upon information furnished to Grand Land Realty, LLC. by sources deemed to be reliable. The information is believed to be accurate in all material respects, but no representation or warranty, expressed, or implied, as to list accuracy or completeness is made by any party. Recipients should conduct their own investigation and analysis of the information described herein.

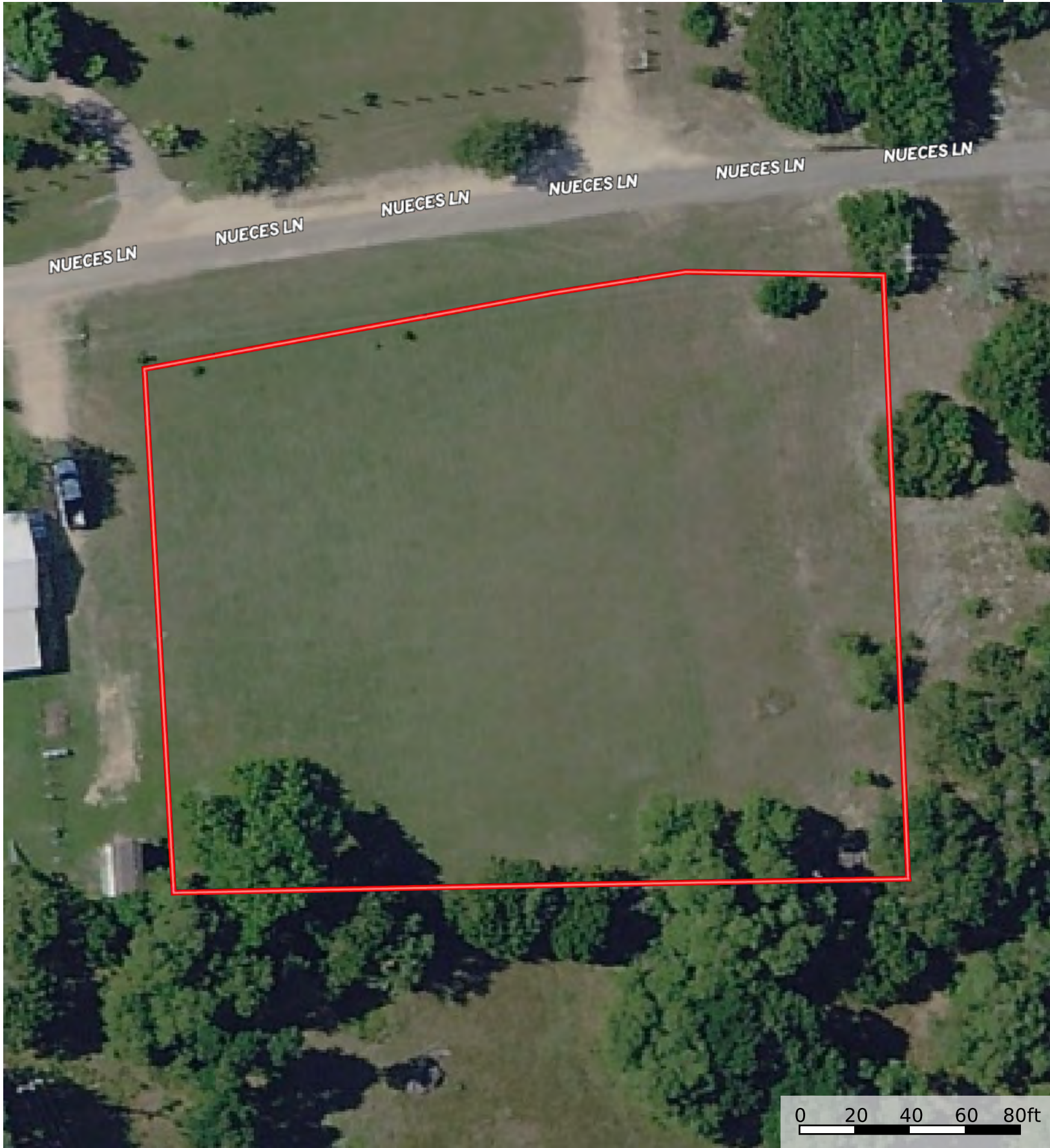


Kayla Martin

Realtor® - Land Specialist

kayla@grandlandco.com

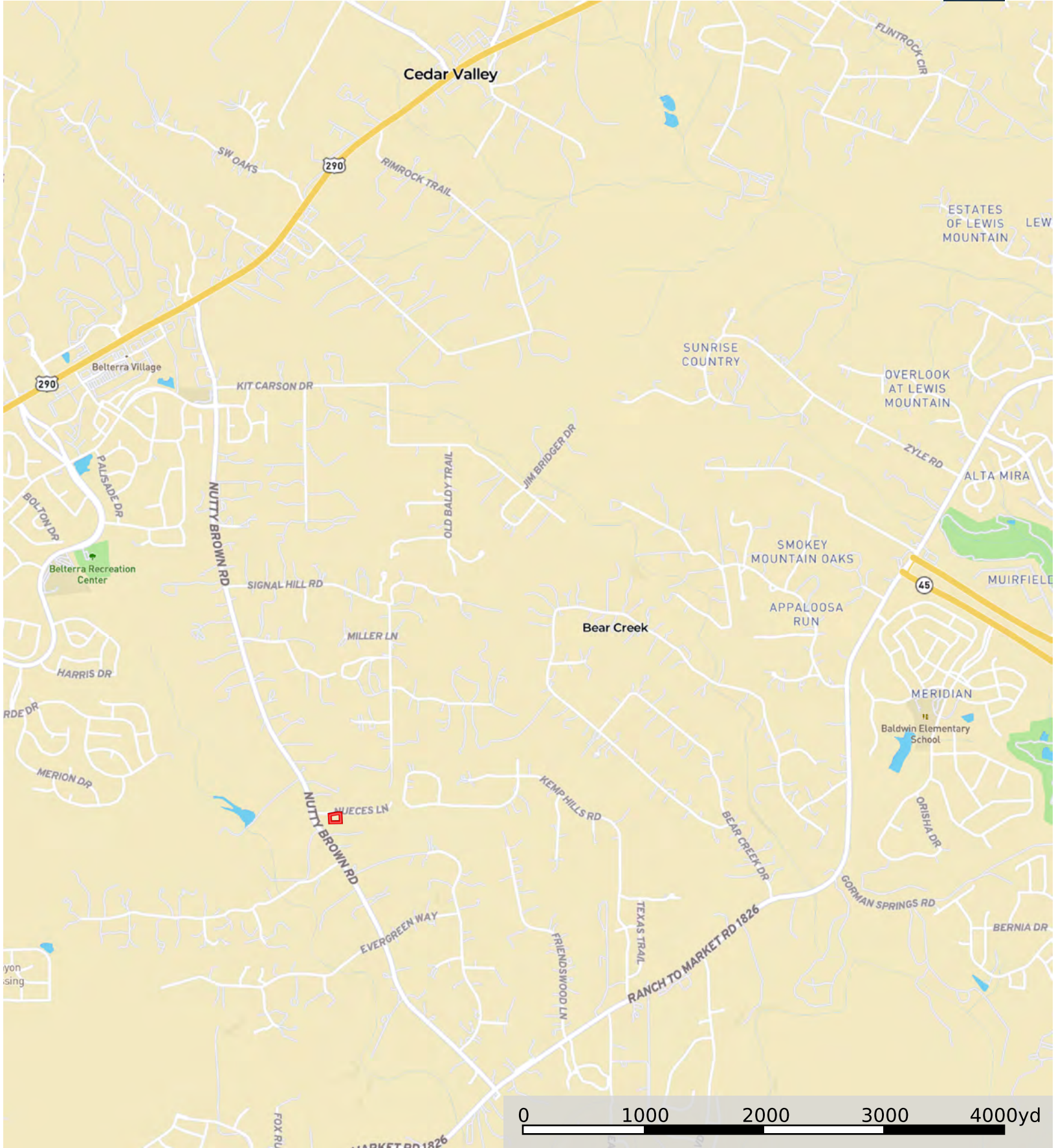
(512) 496-2566



 Boundary



 Boundary



 Boundary