



Tres Charco Ranch

FM 844, Goliad, TX

286.8 Acres

\$1,218,900



HUNTING | GRAZING | ROLLING TOPOGRAPHY | TERRACED PASTURES

With a wonderful mix of brush and open grassland across 286 acres, this is a perfect dual property to hunt and raise cattle. The rolling and sloping topography has 60 feet of elevation change. A cleared area near the center of the eastern boundary would make a great homesite with sweeping views from the hilltop. There is nearly half a mile of FM road frontage. There is a small seasonal pond on the property.

Excellent bucks with several doe have been seen on each visit to the property. Additional game animals include hog, bobwhite quail, Rio Grande turkey, cottontail rabbits, and seasonal mourning and white-winged dove. Predators such as bobcats and coyotes also frequent the area.

The large pastures are terraced for water conservation. Caliche and gravel roads make it easy to drive throughout the property and along the perimeter. Three sides are fenced in barbed wire and the western boundary is held by an electric fence due to rotational cattle grazing with the neighbor. A cross-fence separates the north pasture from the south. No utilities exist on the property, but a power line for electricity is available along the road front-age.

The property is currently qualified under the Agricultural tax valuation.

Copyright 2020 Grand Land Realty, LLC

The material contained in this document is based in part upon information furnished to Grand Land Realty, LLC. by sources deemed to be reliable. The information is believed to be accurate in all material respects, but no representation or warranty, expressed, or implied, as to list accuracy or completeness is made by any party. Recipients should conduct their own investigation and analysis of the information described herein.



Kendrick Baros

Realtor®

kendrick@grandlandco.com

(361) 212-2892



Tres Charco Ranch

FM 844, Goliad, TX

286.8 Acres

\$1,218,900



WATER

1 Seasonal Pond

Terraced pastures for
water conservation

TREES

Mesquite, Hackberry

SHRUBS

Hogplum, Granjeno, Twist-
ed Acacia

GRASSES

KR Bluestem, Little Bluestem,
Texas Winter Grass

WILDLIFE

Whitetail Deer, Rio Grande
Turkey, Cottontail Rabbits,
Seasonal Mourning and
White-Winged Dove, Bob-
white Quail, Feral Hogs

UTILITIES

Well Needed | Electricity Available

Copyright 2020 Grand Land Realty, LLC

The material contained in this document is based in part upon information furnished to Grand Land Realty, LLC. by sources deemed to be reliable. The information is believed to be accurate in all material respects, but no representation or warranty, expressed, or implied, as to list accuracy or completeness is made by any party. Recipients should conduct their own investigation and analysis of the information described herein.

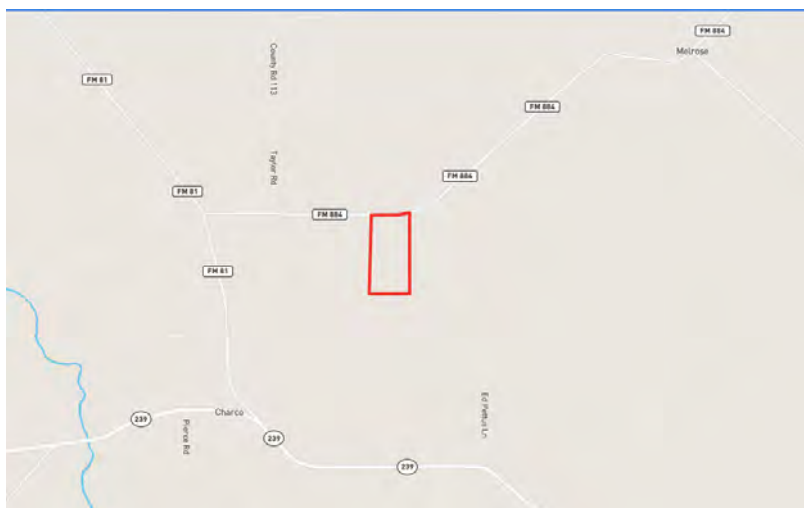


Kendrick Baros

Realtor®

kendrick@grandlandco.com

(361) 212-2892



LOCATION

Goliad County

11 miles to Runge

15 Miles to Goliad

DIRECTIONS

From Charco, north on FM 81 for 2.1 miles. Turn right (east) on FM 884 for 2.5 miles. The property is on the right just before Ed Pettus Lane.

Copyright 2020 Grand Land Realty, LLC

The material contained in this document is based in part upon information furnished to Grand Land Realty, LLC. by sources deemed to be reliable. The information is believed to be accurate in all material respects, but no representation or warranty, expressed, or implied, as to list accuracy or completeness is made by any party. Recipients should conduct their own investigation and analysis of the information described herein.



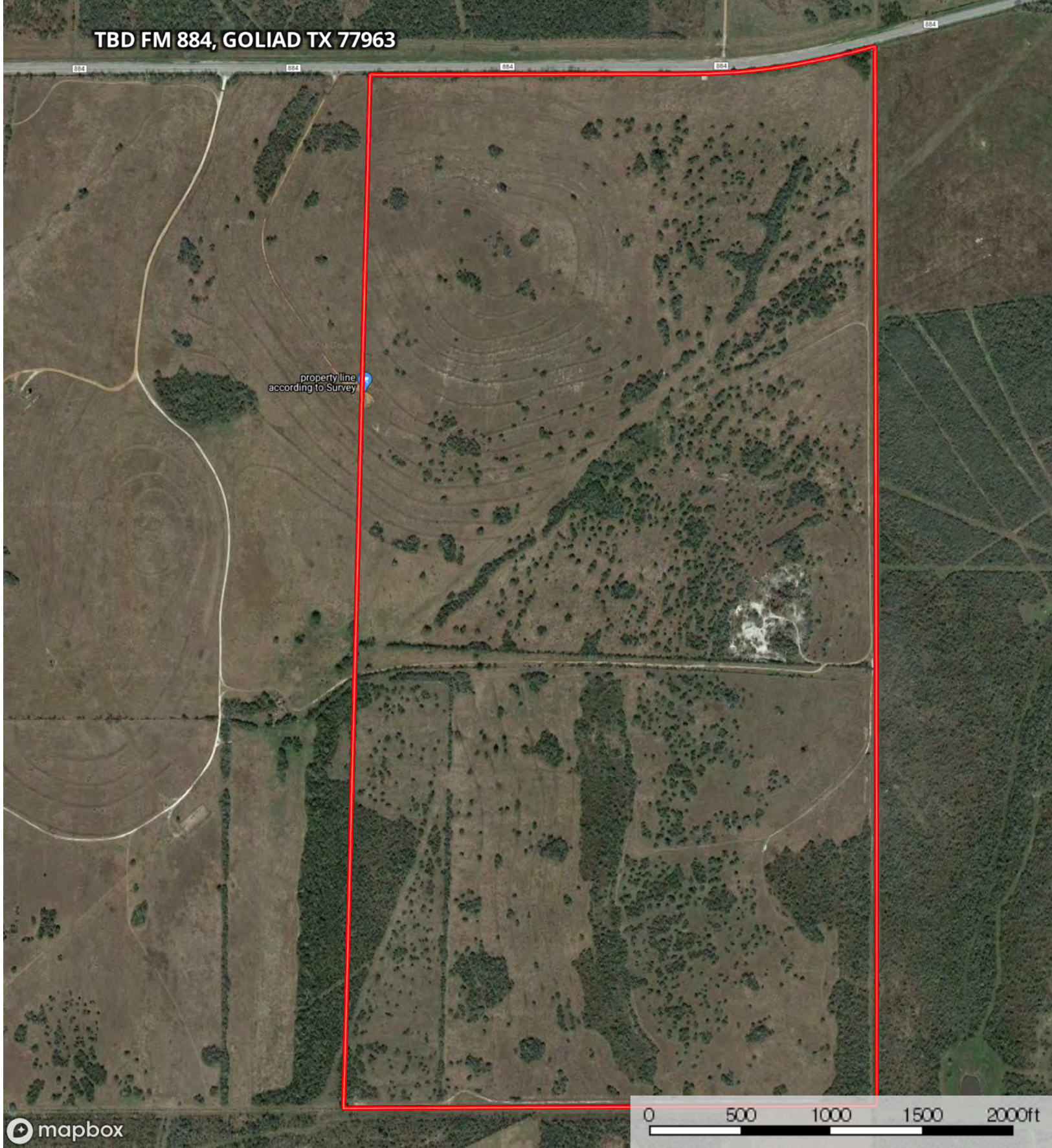
Kendrick Baros


Realtor®

kendrick@grandlandco.com

(361) 212-2892

TBD FM 884, GOLIAD TX 77963



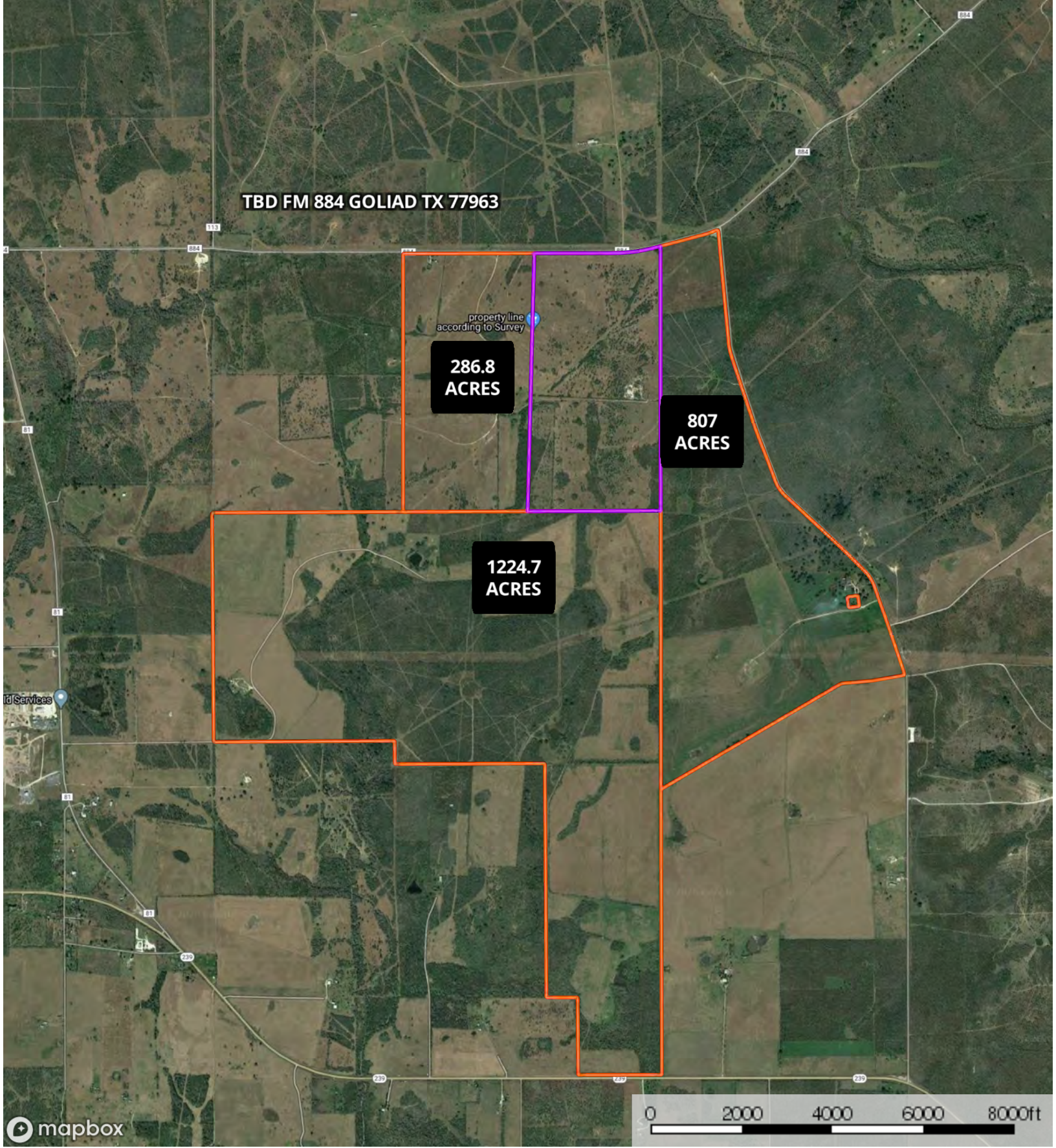
 Boundary

Location
Goliad County, Texas, 286.8 AC +/-



Boundary

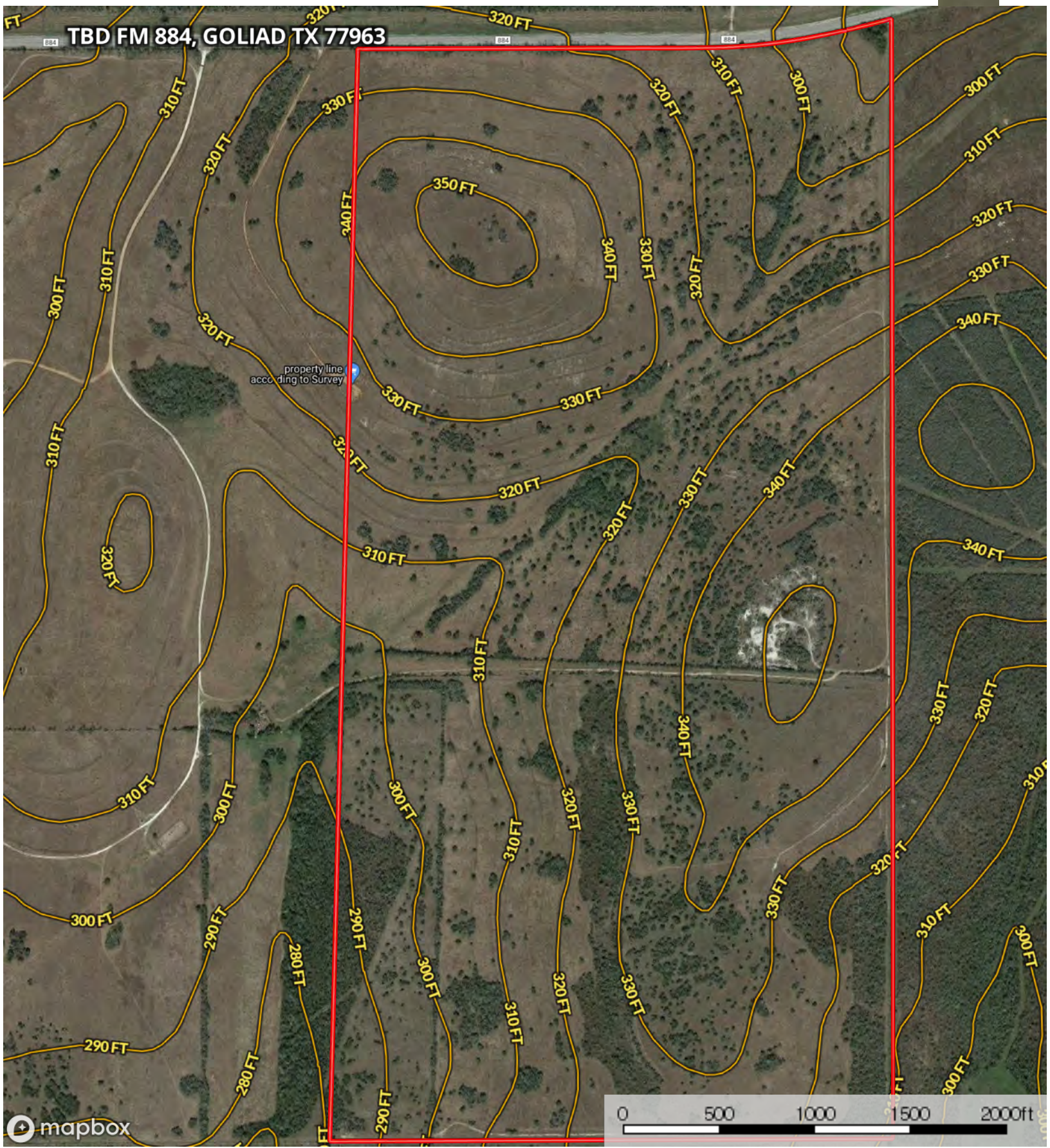




Subject Property

Neighbor

Boundary



Boundary