



# Pin Oak Farm

174 Old Pin Oak Rd, Paige, TX 78659

70 Acres

\$670,315



## 4 PONDS | SEASONAL CREEK | MINERALS | HUNTING

This diverse property is comprised of oak and elm woods, a fenced hay field, mesquite grassland, and multiple water sources throughout. This great farming and hunting homestead includes all utilities and 100% mineral rights less than half a mile off Hwy 290 in Paige.

The rectangular tract is mostly level. The front 15 acres include native grasses, scattered mesquite, and large elm trees surrounding the homesite. A 15-acre fenced hay pasture is in the middle of the property. The back portion is densely covered in mature trees including post oaks, elms, live oak, and cedar, as well as smaller undergrowth such as yaupon. Three fishing ponds in the front portion of the property are stocked with bass, perch, and catfish. The largest pond is on the edge of the wooded back half. Just past this pond, a wet-weather creek runs the width of the property and holds water in places throughout the year. Hunting is permitted. The back portion of the property provides perfect cover and water sources for various wildlife including whitetail deer, hogs, coyotes, bobcats, opossum, raccoons, owls, armadillos, squirrels, red-tailed hawks, and songbirds.

Utilities include Bluebonnet Electric, county water line with meter, and septic system. The property is fenced and cross-fenced in good condition barbed wire. A small house with 3 beds and 1 bath is in need of repair. There is a 360 sq. ft. attached carport and a 50 amp RV hookup. A chicken coop or storage building is located in the yard and a 540 sq. ft. pole barn is next to the cattle pens. An abandoned mobile home near the main home will be removed before the sale.

The property is currently qualified under the Agricultural tax valuation.

Copyright 2020 Grand Land Realty, LLC

The material contained in this document is based in part upon information furnished to Grand Land Realty, LLC. by sources deemed to be reliable. The information is believed to be accurate in all material respects, but no representation or warranty, expressed, or implied, as to list accuracy or completeness is made by any party. Recipients should conduct their own investigation and analysis of the information described herein.



**Kendrick Baros**

Realtor®

kendrick@grandlandco.com

(361) 212-2892



# Pin Oak Farm

174 Old Pin Oak Rd, Paige, TX 78659

70 Acres

\$670,315



## WATER

4 Ponds

Seasonal Creek

## TREES

Post Oak

Elm

Mesquite

## WILDLIFE

Whitetail Deer, Hogs,  
Bass, Catfish, Song-  
birds

## UTILITIES

Co-Op Water on Property | Electricity on Property | Septic On Property

Copyright 2020 Grand Land Realty, LLC

The material contained in this document is based in part upon information furnished to Grand Land Realty, LLC. by sources deemed to be reliable. The information is believed to be accurate in all material respects, but no representation or warranty, expressed, or implied, as to list accuracy or completeness is made by any party. Recipients should conduct their own investigation and analysis of the information described herein.

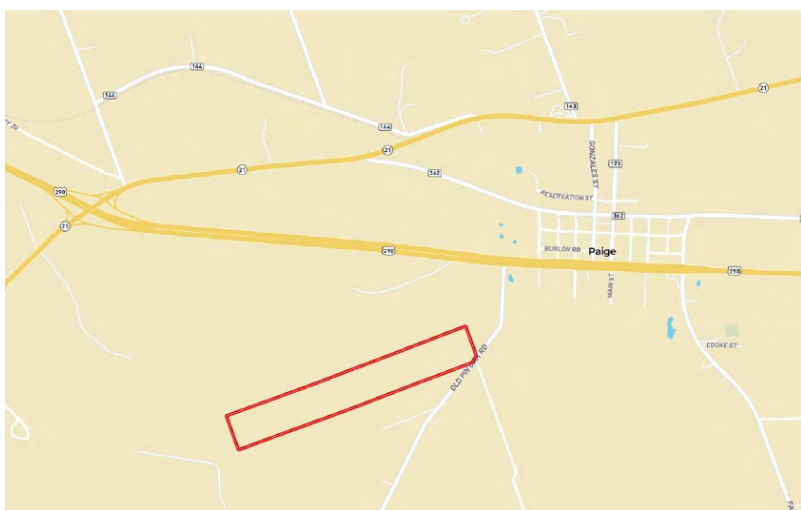


**Kendrick Baros**

Realtor®

kendrick@grandlandco.com

(361) 212-2892



## LOCATION

Bastrop County

14 Miles to Bastrop

## DIRECTIONS

From Austin, take Hwy 290 east to Paige. Turn right onto Old Pin Oak Rd. The entrance is 0.3 miles on the right.

Copyright 2020 Grand Land Realty, LLC

The material contained in this document is based in part upon information furnished to Grand Land Realty, LLC. by sources deemed to be reliable. The information is believed to be accurate in all material respects, but no representation or warranty, expressed, or implied, as to list accuracy or completeness is made by any party. Recipients should conduct their own investigation and analysis of the information described herein.

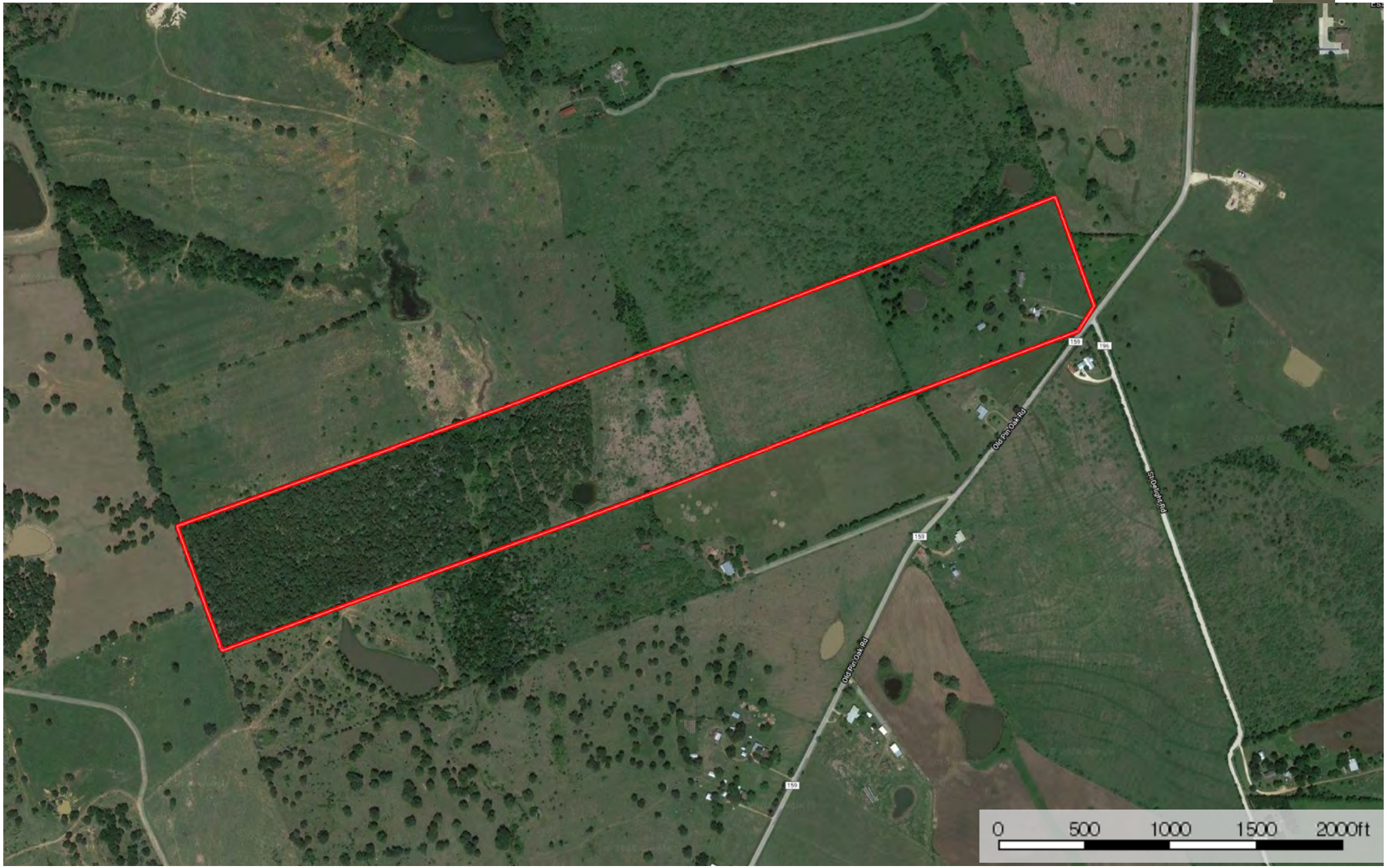



**Kendrick Baros**

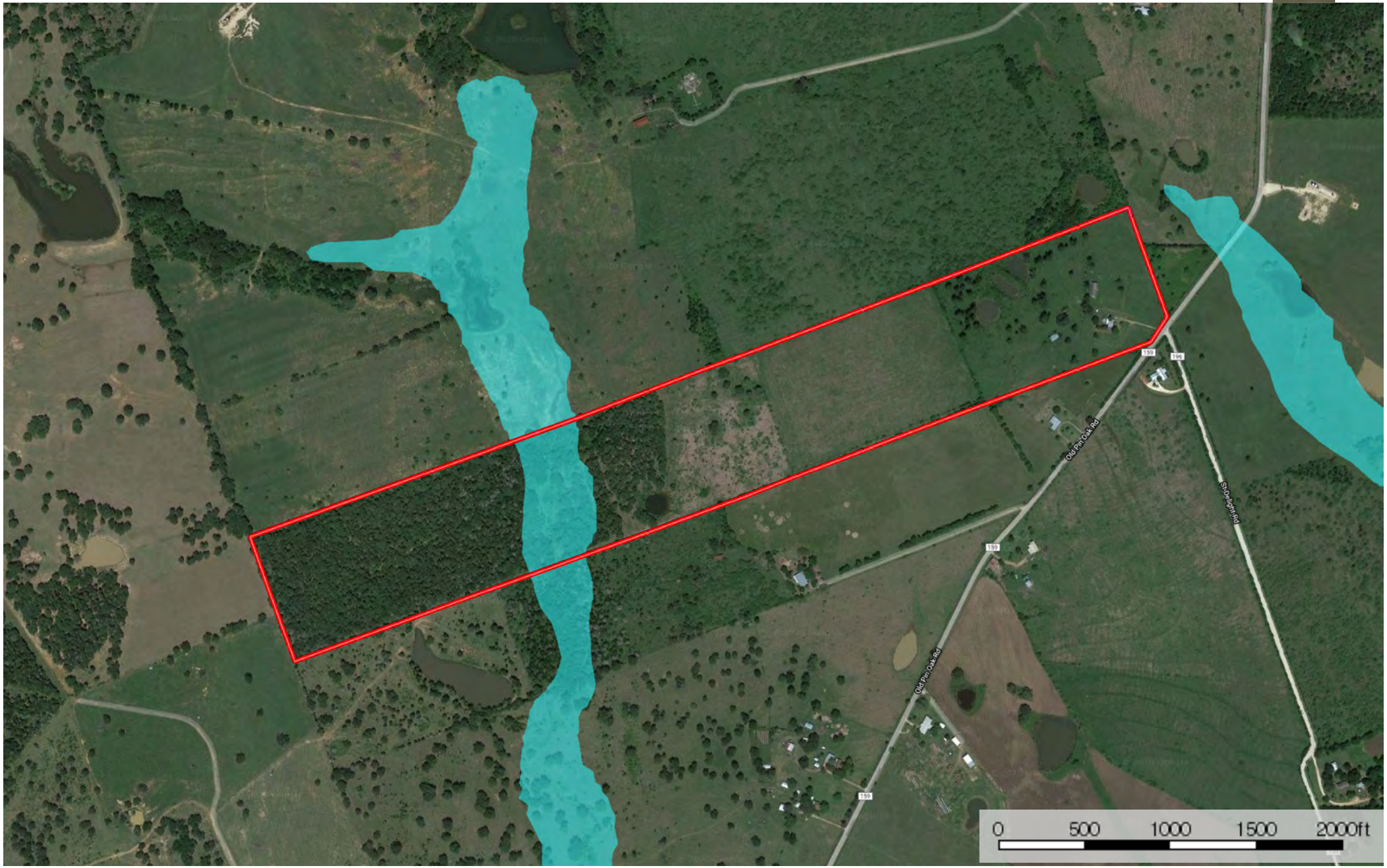
Realtor®

[kendrick@grandlandco.com](mailto:kendrick@grandlandco.com)

(361) 212-2892



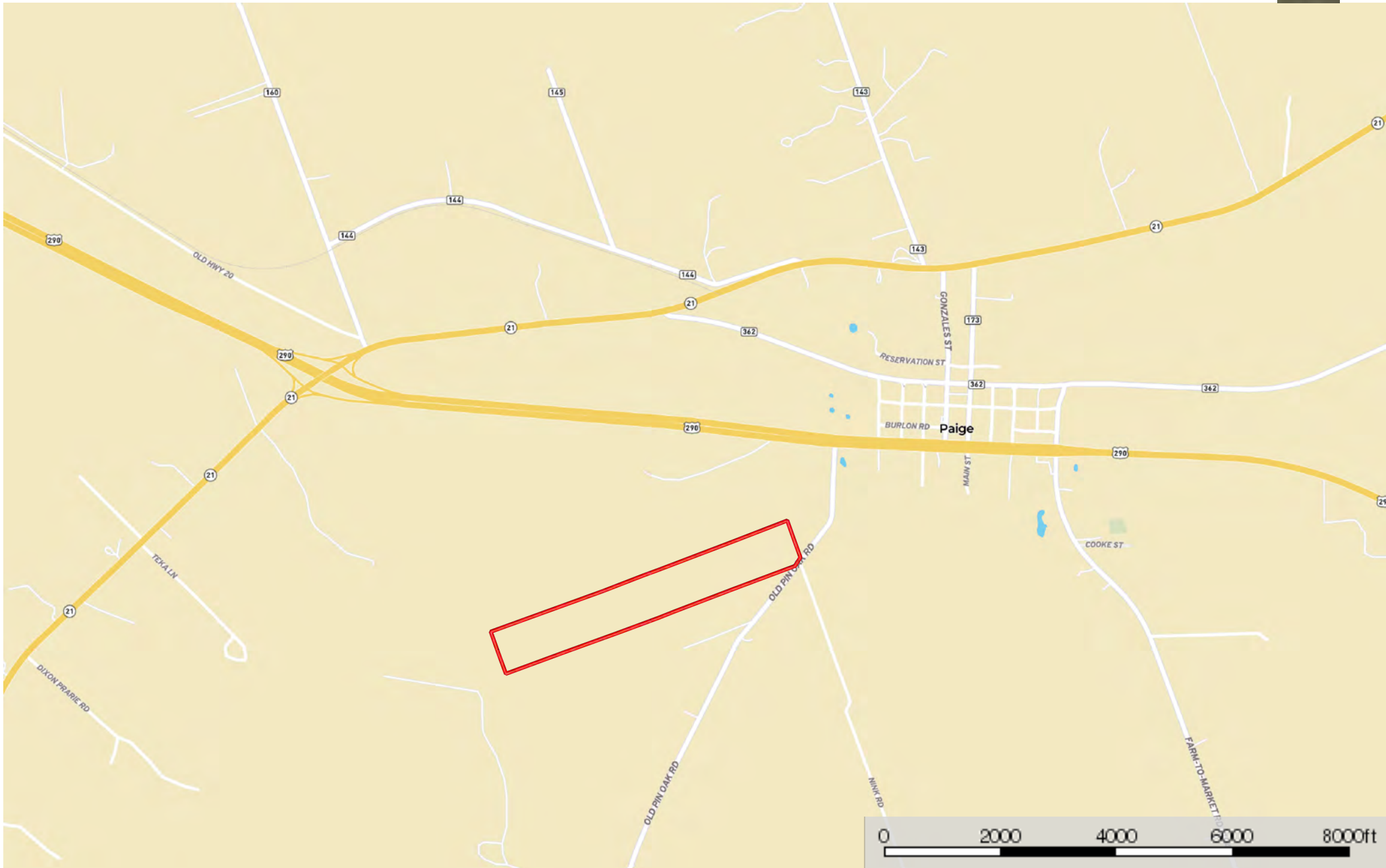
 Boundary



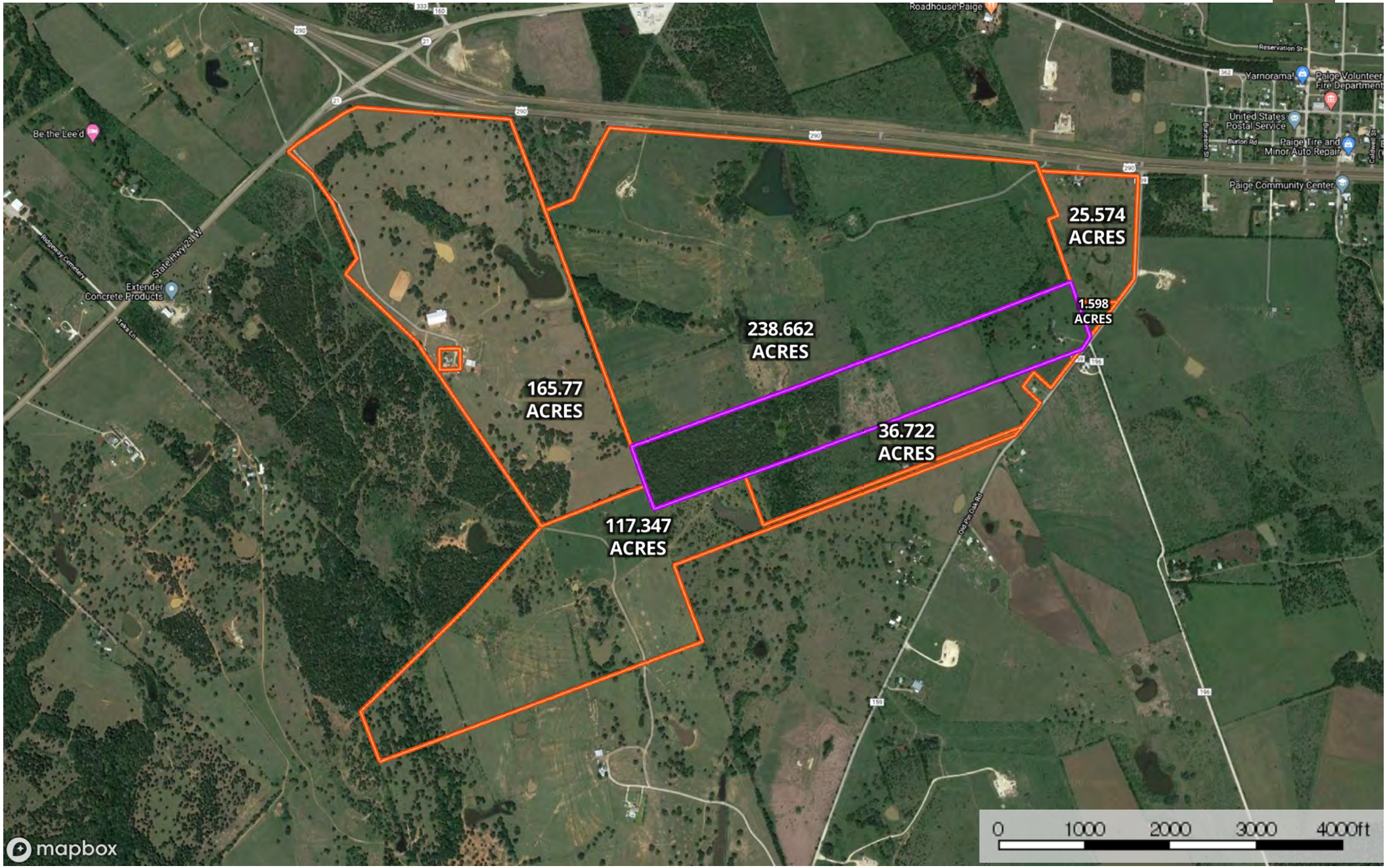
- Boundary
- 100 Year Floodplain
- 500 Year Floodplain
- Floodway
- Special
- Unmapped/ Not Included

# Location

Bastrop County, Texas, 70 AC +/-

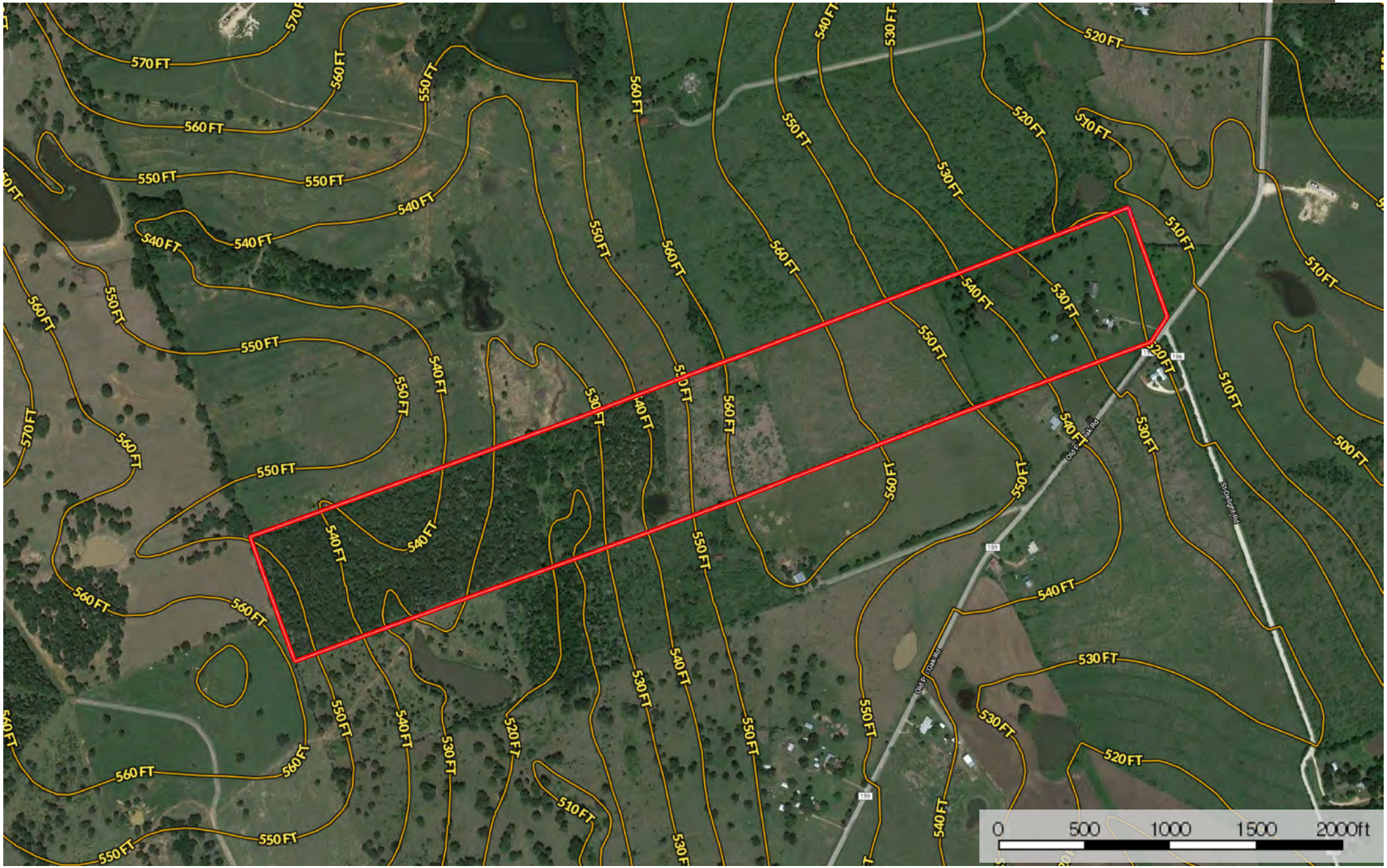


Boundary



mapbox

- Subject Property
- Neighbor Boundary
- Boundary



Boundary