



# Hondo Hideaway Ranch

CR 2410 Hondo, TX

250.59 Acres

\$1,499,000



## HILL COUNTRY TERRAIN | IMPROVED ROADS | PANORAMIC VIEWS | MINERALS

The Hondo Hideaway Ranch is a quiet end-of-the-road ranch with 250 acres of cleared oak meadows and panoramic Hill Country views. All of the leg work has been done for you to enjoy this hunting ranch, build your dream home, or subdivide into smaller ranchettes. This rare find is unrestricted and includes all minerals and many accessories.

The beautiful rolling Hill Country terrain is a mix of rocky limestone hills and grassy meadows with cedar and mountain laurels through-out. Improved roads and trails provide easy access to the entire property. The land has been cleared and mulched in several areas to highlight the beautiful live oak trees. 100 feet of elevation change allows for long-range views from the cleared hilltops. A pond and small tank by the home site are filled by the water well. There are several wet-weather ravines and two other ponds that hold water when rain is plentiful.

Hunting opportunities include many whitetail deer, turkey and feral hogs, along with quail and dove. Other wildlife includes blue herons, barn owls, various songbirds, raccoons, opossum, and occasional bobcats and coyotes.

The main road is covered with base rock and is very passable by car. The crossroads are perfect for ATV travel. The perimeter fencing is in excellent condition barbed-wire with one side high-fenced. An electric meter and water well with PVC casing and pump house are located at the home site.

Conveyed accessories include a turnkey 30 ft. travel trailer with slide out, 30 HP John Deer tractor with front end loader, shredder, and box blade attachment, Conex container for secure storage, refrigerator, two executive deer blinds, several feeders, and a hog trap.

The property is currently qualified under the Agricultural tax valuation.

Copyright 2020 Grand Land Realty, LLC

The material contained in this document is based in part upon information furnished to Grand Land Realty, LLC. by sources deemed to be reliable. The information is believed to be accurate in all material respects, but no representation or warranty, expressed, or implied, as to list accuracy or completeness is made by any party. Recipients should conduct their own investigation and analysis of the information described herein.



**Kendrick Baros**

Realtor®

kendrick@grandlandco.com

(361) 212-2892



# Hondo Hideaway Ranch

CR 2410 Hondo, TX

250.59 Acres

\$1,499,000



## WATER

2 Ponds

Water Well

Windmill

Wet Weather Ravines

## TREES

Live Oak, Spanish Oak, Cedar

## SHRUBS

Mountain Laurel, Plain Leaf Sumac, Agarita, Yucca,

## GRASSES

Little Bluestem, King Ranch Bluestem

## WILDLIFE

Whitetail Deer, Turkey, Feral Hogs, Bobcat, Quail, Dove, Songbirds, Blue Heron, Barn Owls

## UTILITIES

Well On Site | Electricity On Site | Septic Needed

Copyright 2020 Grand Land Realty, LLC

The material contained in this document is based in part upon information furnished to Grand Land Realty, LLC. by sources deemed to be reliable. The information is believed to be accurate in all material respects, but no representation or warranty, expressed, or implied, as to list accuracy or completeness is made by any party. Recipients should conduct their own investigation and analysis of the information described herein.



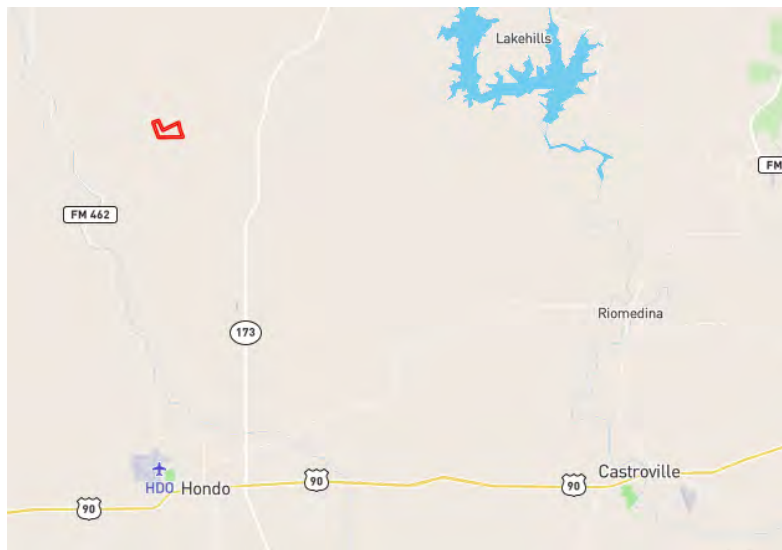
**Kendrick Baros**

Realtor®

kendrick@grandlandco.com

(361) 212-2892





## LOCATION

Medina County

15 miles to Hondo

55 Miles to downtown San Antonio.

## DIRECTIONS

From Hondo, head North on HWY 173 turning left on CR 241. Continue 5 miles until you pass CR 242. 1/2 mile passed CR 242, Private Road 2410 will be on the left.

Copyright 2020 Grand Land Realty, LLC

The material contained in this document is based in part upon information furnished to Grand Land Realty, LLC. by sources deemed to be reliable. The information is believed to be accurate in all material respects, but no representation or warranty, expressed, or implied, as to list accuracy or completeness is made by any party. Recipients should conduct their own investigation and analysis of the information described herein.



**Kendrick Baros**

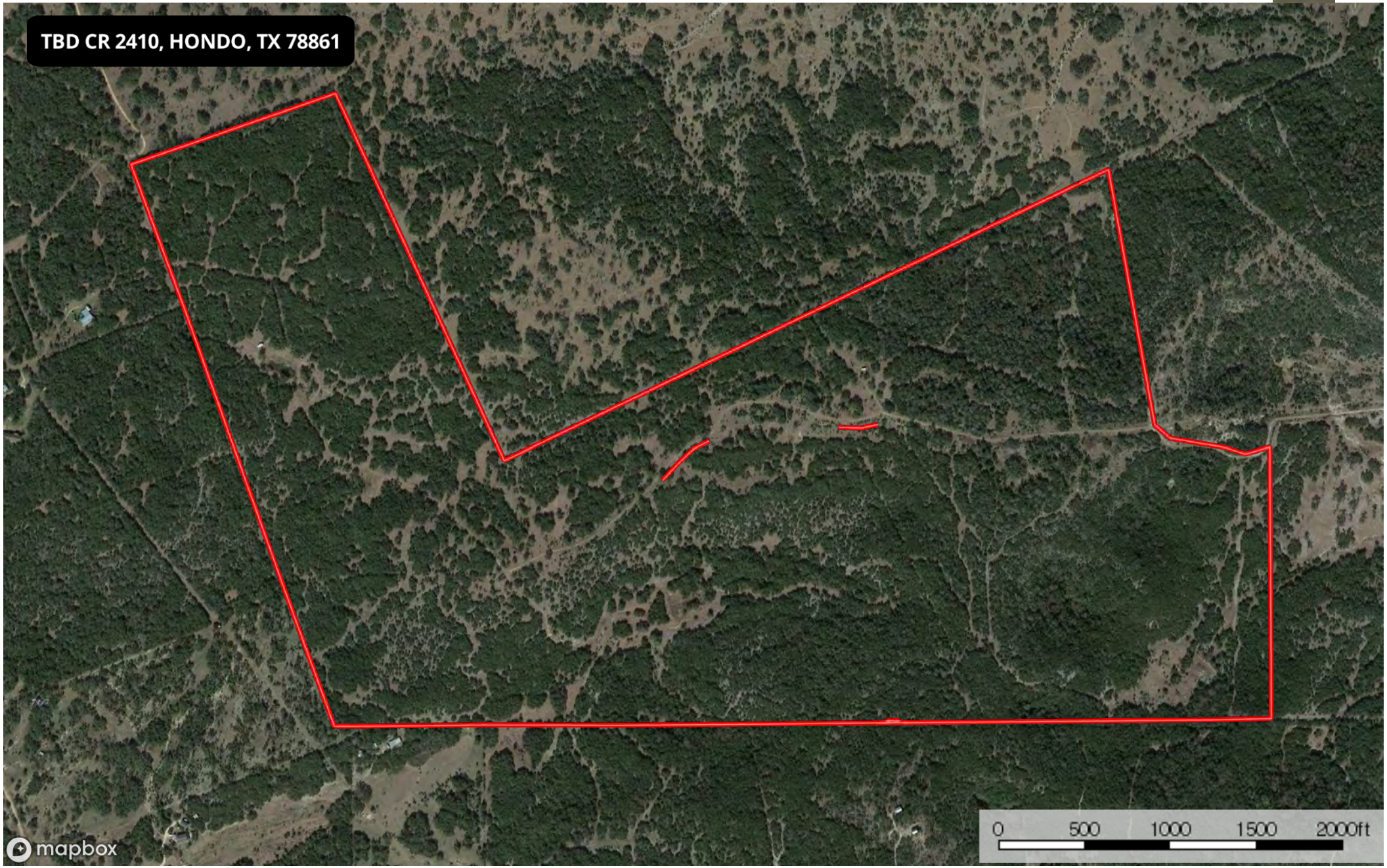
Realtor®

[kendrick@grandlandco.com](mailto:kendrick@grandlandco.com)

(361) 212-2892




TBD CR 2410, HONDO, TX 78861



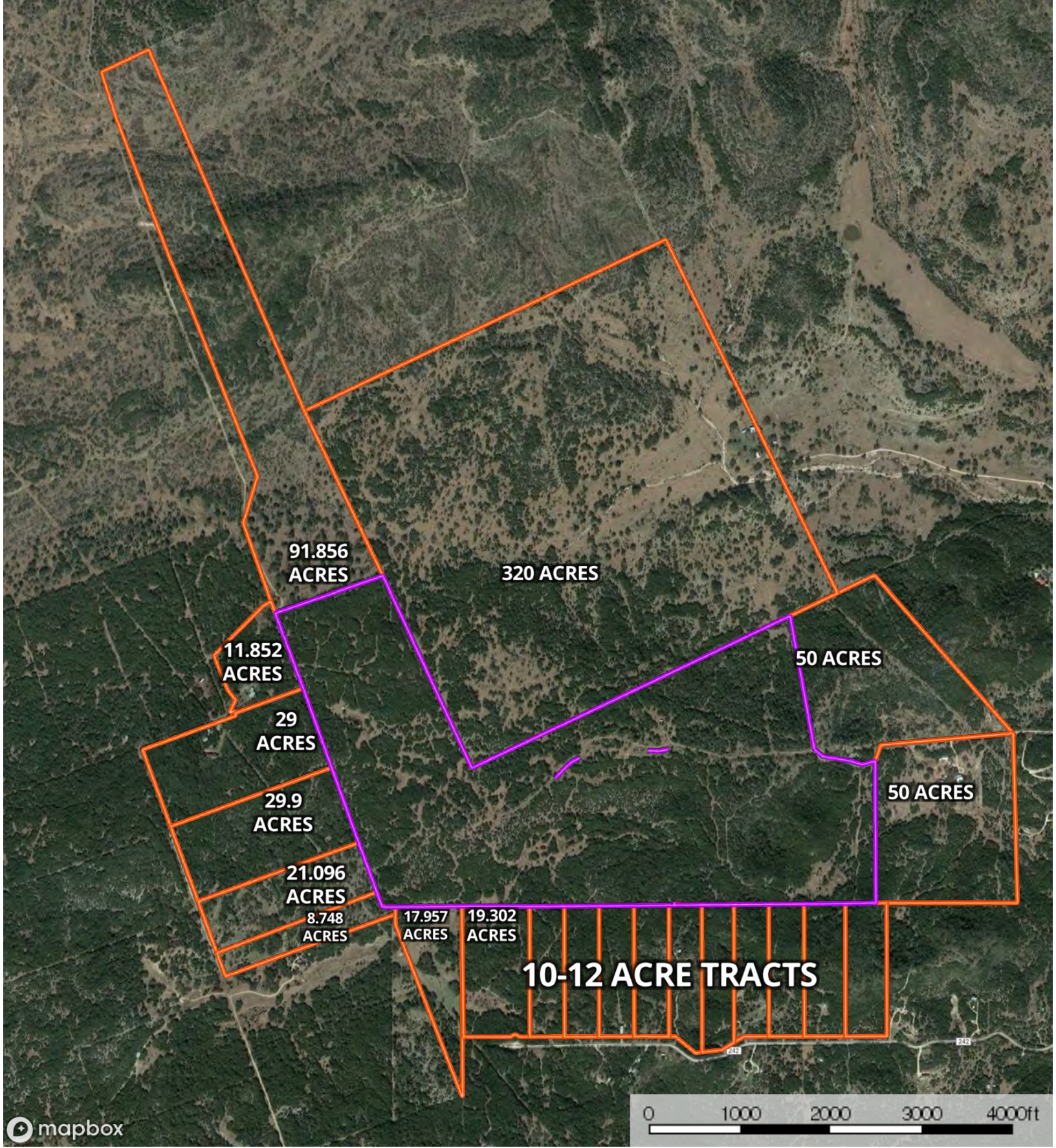
mapbox

Boundary

Kendrick Baros  
361-212-2892  
kendrick@grandlandco.com

 The information contained herein was obtained from sources deemed to be reliable. MapRight Services makes no warranties or guarantees as to the completeness or accuracy thereof.

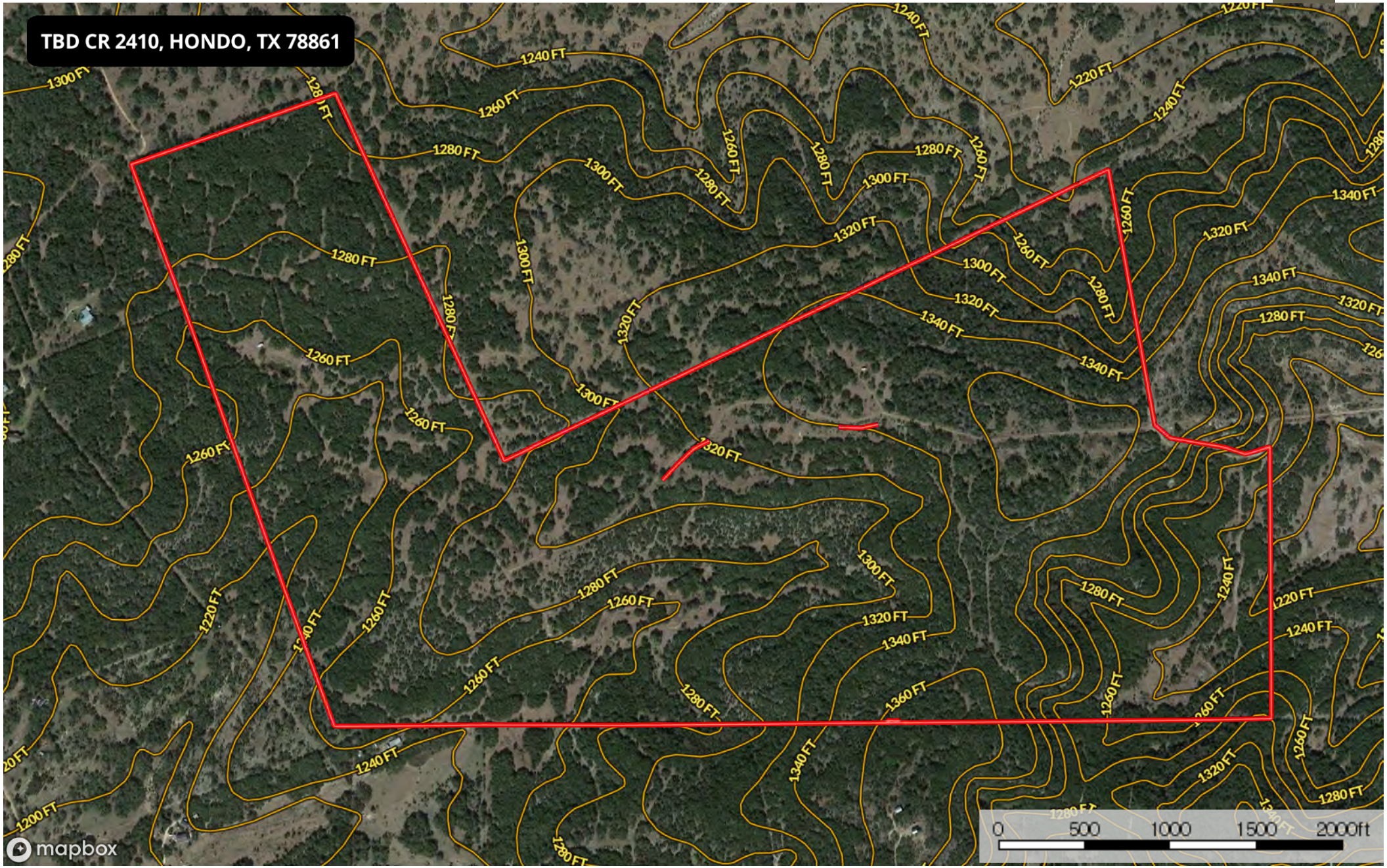




- Subject Property
- Neighbor Boundary
- Boundary



TBD CR 2410, HONDO, TX 78861



Boundary

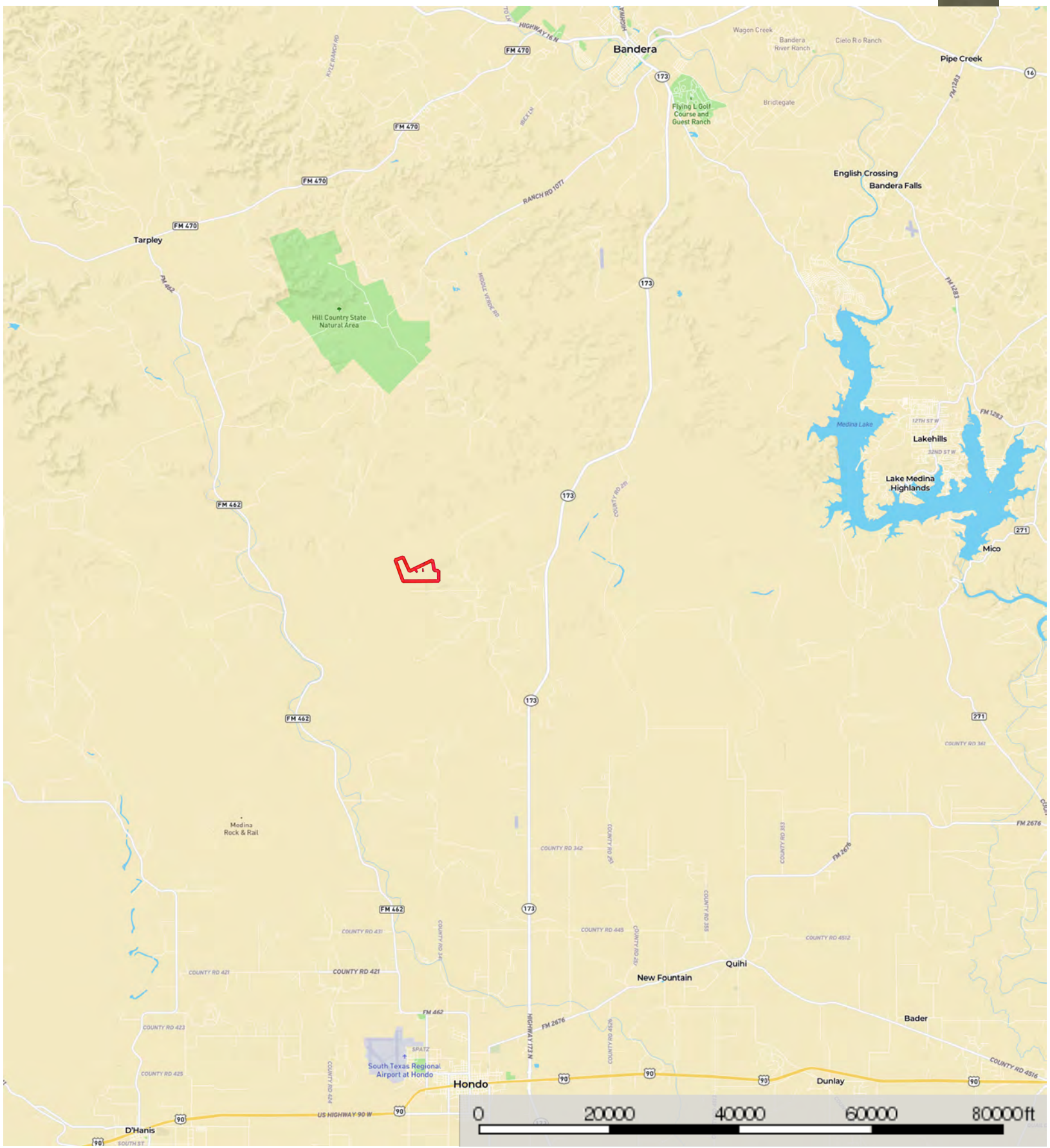
Kendrick Baros  
361-212-2892  
kendrick@grandlandco.com

The information contained herein was obtained from sources deemed to be reliable. MapRight Services makes no warranties or guarantees as to the completeness or accuracy thereof.



# Location

Medina County, Texas, 250.59 AC +/-



Boundary

**Kendrick Baros**  
361-212-2892  
kendrick@grandlandco.com

The information contained herein was obtained from sources deemed to be reliable. MapRight Services makes no warranties or guarantees as to the completeness or accuracy thereof.